

# 環保工業工程用

塑膠管件、配件、螺絲/PP·PVC製品



E-mail/ [hj5939508@hotmail.com](mailto:hj5939508@hotmail.com)

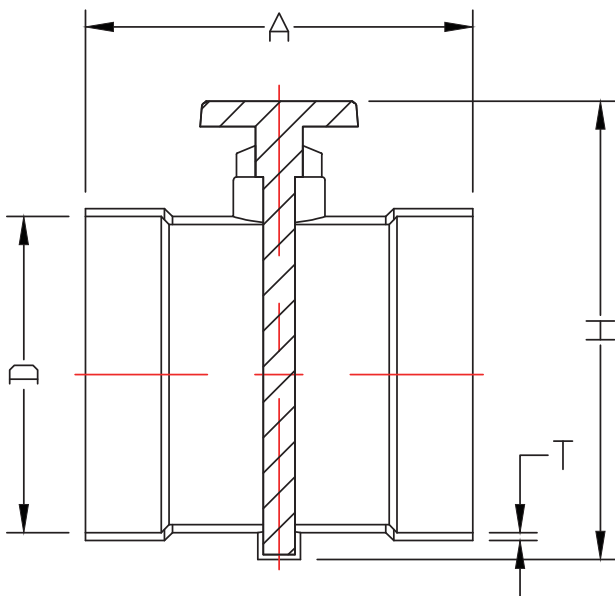
Tel/06.5931-991 Fax/06.5934-651

地址/台南市安定區中沙里沙崙32-2號

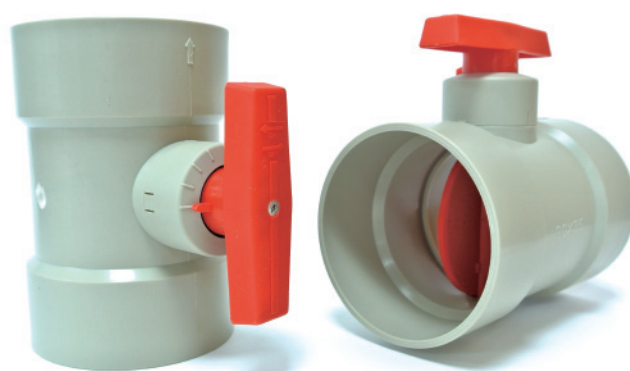
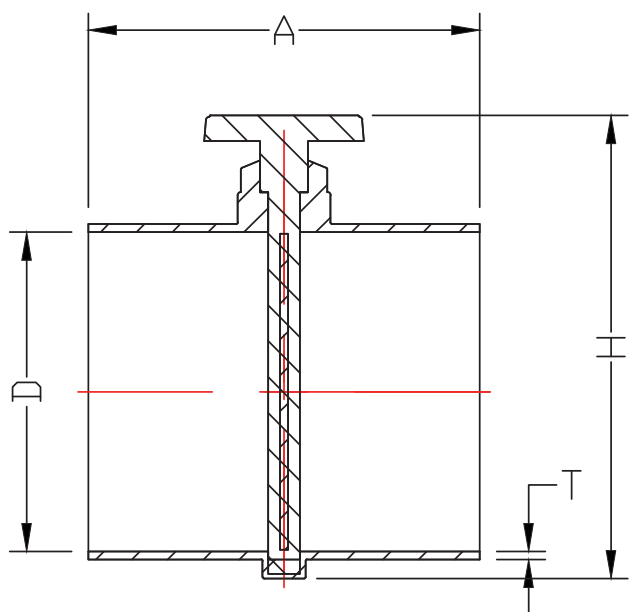
統編/36691372

風門	01	平接頭(同徑)	15
90°彎頭	03	管帽	16
45°彎頭	05	外牙閥接頭(套接)	17
大月彎	06	外牙塞頭	19
盲法蘭	07	外牙閥接頭(對接) 雙外牙接頭	20
焊接法蘭	08	內牙接頭(套接)	21
法蘭	09	內牙接頭(對接)	22
彎頭法蘭 橡膠墊片	10	內牙接頭(短) 內牙接頭(三通用)	23
三通	11	長型大小接頭	24
異徑三通(套接)	12	長型大小接頭(共用)	26
異徑三通(內牙) 三通(對接)	13		
四通	14		

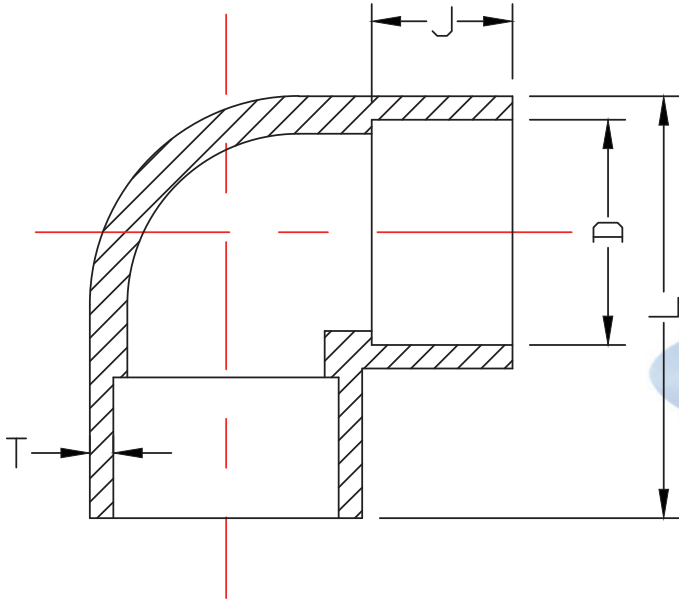
短型大小接頭	27	網版 圓形隔柵板	39
拉西環	28	萬向接頭 桶心	40
網狀型、六瓣型、海膽型、皇冠型、地球型			
噴水頭	30	卜申 內牙貼片	41
螺旋型、一字型、圓錐型、攪拌型、O型			
由令	32	濾管 內牙接頭(對接) 內牙接頭(套接)	42
雙由令	33	塑膠華司 塑膠螺母	43
彎頭由令	34	塑膠螺絲(公制細牙M)	44
外牙接軟管 L型PT牙接頭	35	外六角內一字、外六角內六角、有頭內六角、 圓頭內十字、皿頭螺絲、止付螺絲	
向上固定座 45°固定座	36	塑膠螺絲(英制粗牙W)	48
荷夾 把手 開關箱把手	37	外六角內一字、外六角內六角、有頭內六角、 梅花螺絲	
浮球開關 可調整高度機械座	38	PP管材	51



日規-風門								單位:mm	
產品編號		規格	D	A	H	T	PP	PVC	
PP	PVC								
AA101-1	AA101-2	2	60	140	115	3.5	√	√	
AA102-1	AA102-2	2-1/2	76	140	130	4	√	-	
AA103-1	AA103-2	3	89	145	150	4	√	√	
AA104-1	AA104-2	4	114	155	170	4	√	√	
AA105-1	AA105-2	5	140	180	200	4	√	-	
AA106-1	AA106-2	6	165	205	230	5	√	√	
AA107-1	AA107-2	8	216	240	280	5.5	√	-	
AA108-1	AA108-2	10	267	275	350	5.5	√	-	
AA109-1	AA109-2	12	318	330	400	5	√	-	

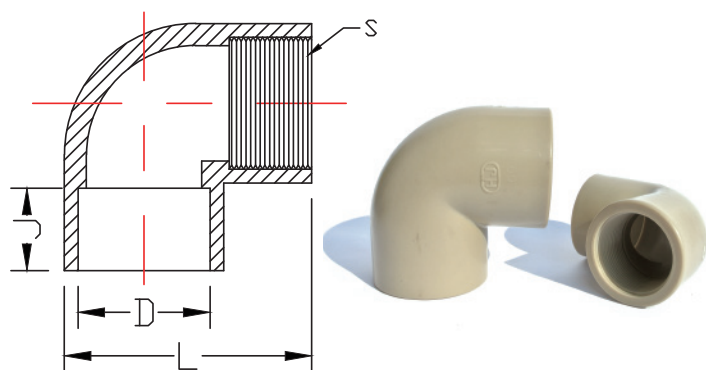


德規-風門								單位:mm
產品編號		規格	D	A	H	T	PP	PVC
PP	PVC							
AA201-1	AA201-2	2	63	140	115	3.5	√	-
AA202-1	AA202-2	2-1/2	75	140	130	4	√	√
AA203-1	AA203-2	3	90	145	150	4	√	-
AA204-1	AA204-2	4	110	155	170	4	√	-
AA205-1	AA205-2	6	160	205	230	5	√	-
AA206-1	AA206-2	8	200	240	280	5	√	-
AA207-1	AA207-2	10	250	275	350	5.5	√	-
AA208-1	AA208-2	12	315	330	400	5.5	√	-
AA209-1	AA209-2	16	400	420	480	6	√	-

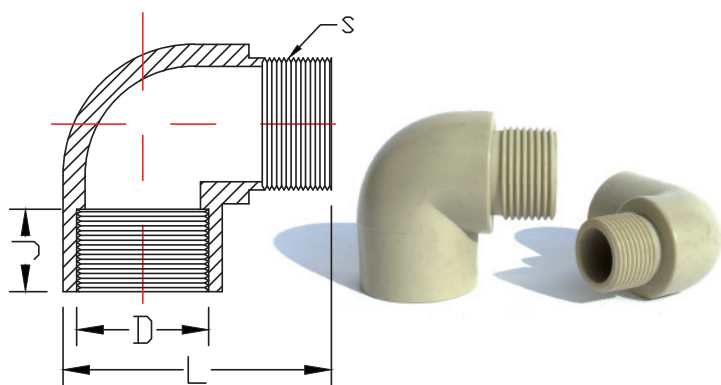


日規-90° 彎頭							單位:mm
產品編號	規格	D	L	J	T	PP	
PP							
BA101-1	1/2	22	46	20	3.5	✓	
BA102-1	3/4	27	57	24	4.5	✓	
BA103-1	1	34	70	27	4.5	✓	
BA104-1	1-1/4	42	77	30	5	✓	
BA105-1	1-1/2	48	90	32	6	✓	
BA106-1	2	60	110	40	6.5	✓	
BA107-1	2-1/2	76	126	35	6.5	✓	
BA108-1	3	89	138	35	6.5	✓	
BA109-1	4	114	170	40	6.5	✓	
BA110-1	5	140	196	45	5.5	✓	

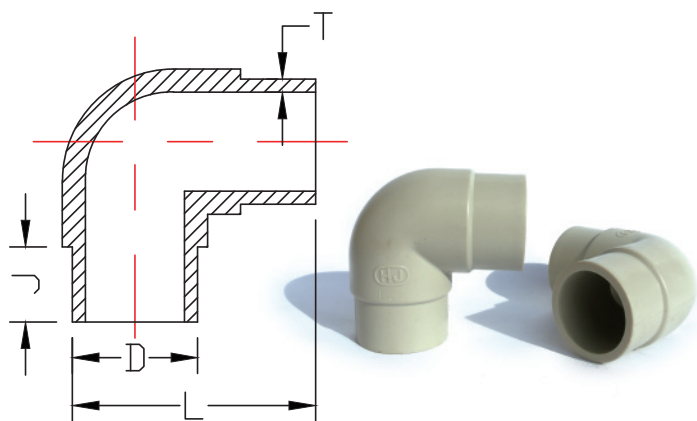
德規-90° 彎頭							單位:mm
產品編號	規格	D	L	J	T	PP	
PP							
-	1/2	20	-	-	-	-	
-	3/4	25	-	-	-	-	
BA201-1	1	32	70	27	5.5	✓	
BA202-1	1-1/4	40	77	30	6	✓	
BA203-1	1-1/2	50	90	32	6.8	✓	
BA204-1	2	63	110	40	8.5	✓	
BA205-1	2-1/2	75	126	35	9	✓	
BA206-1	3	90	138	35	10.5	✓	
BA207-1	4	110	170	40	9.5	✓	



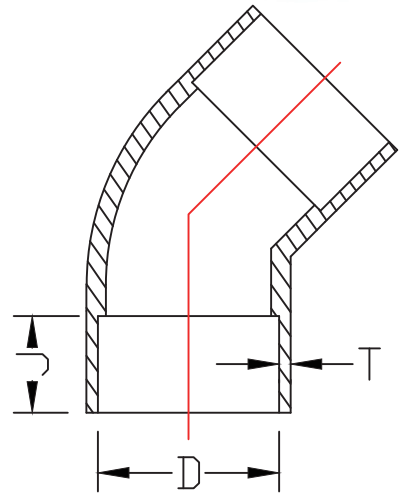
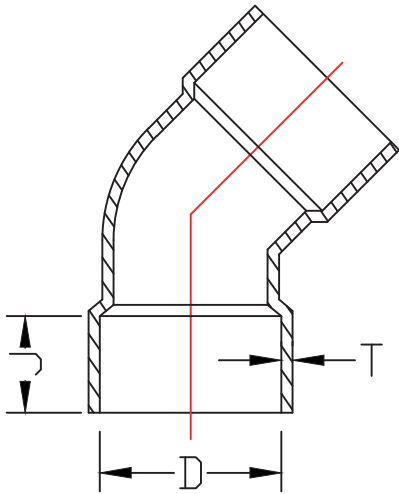
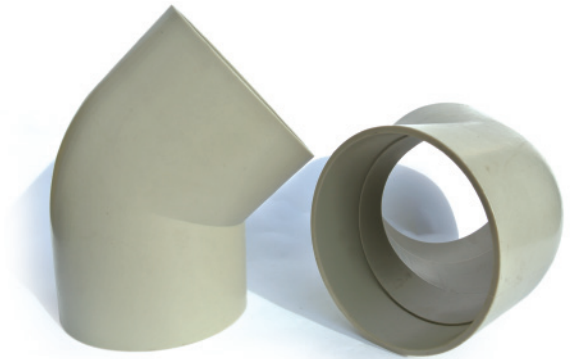
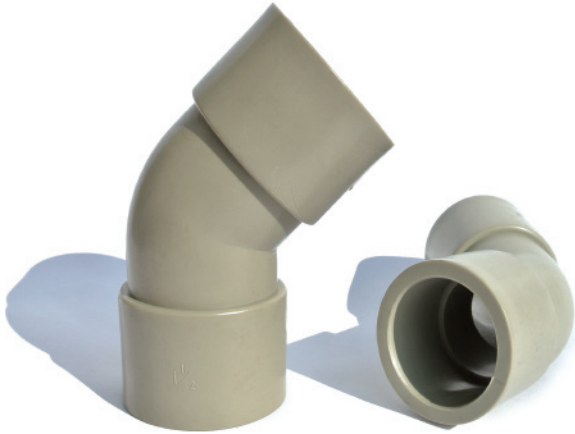
日規-90° 內牙彎頭						單位:mm
產品編號	規格	D	J	L	S×牙數	PP
PP						
BB101-1	1/2	22	20	46	PT 1/2×14	✓
BB102-1	3/4	27	24	57	PT 3/4×14	✓
BB103-1	1	34	27	70	PT 1×11	✓
BB104-1	1-1/2	48	30	90	PT 1 1/2×11	✓
BB105-1	2	60	32	110	PT 2×11	✓
-	2-1/2	76	-	-	-	-
-	3	89	-	-	-	-
-	4	114	-	-	-	-



日規-90° 彎頭(內外牙)						單位:mm
產品編號	規格	D	J	L	S×牙數	PP
PP						
BC101-1	1/2	22	20	46	PT 1/2×14	✓
BC102-1	3/4	27	24	57	PT 3/4×14	✓
BC103-1	1	34	27	70	PT 1×11	✓
-	2-1/2	76	-	-	-	-
-	3	89	-	-	-	-
-	4	114	-	-	-	-



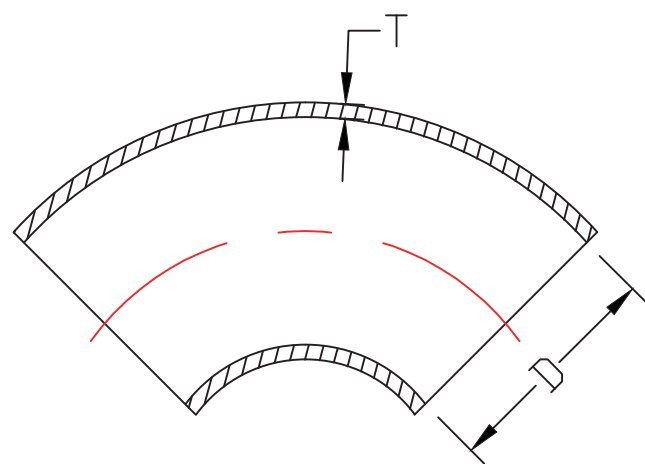
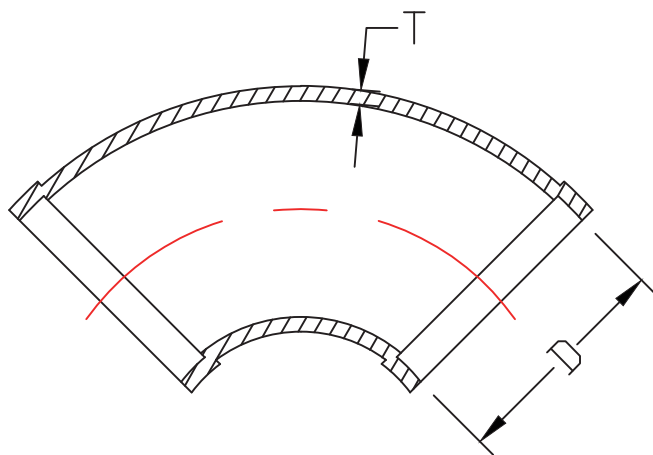
德規-90° 彎頭(對接)						單位:mm
產品編號	規格	D	J	L	T	PP
PP						
BD201-1	1-1/2	50	26	90	5	✓
BD202-1	2	63	26	105	6	✓



日規-45° 彎頭					
					單位:mm
產品編號	規格	D	J	T	PP
PP					
BE101-1	1/2	22	25	4	✓
BE102-1	3/4	27	30	4	✓
BE103-1	1	34	34	4.5	✓
BE104-1	1-1/4	42	34	6	✓
BE105-1	1-1/2	48	34	6.5	✓
BE106-1	2	60	34	6.5	✓
BE107-1	2-1/2	76	37	6.5	✓
BE108-1	3	89	37	6.5	✓
BE109-1	4	114	37	6.5	✓
BE110-1	5	140	48	5	✓
BE111-1	6	165	53	5	✓
BE112-1	8	216	45	5	✓
-	10	267	-	-	-
-	12	318	-	-	-

德規-45° 彎頭					
					單位:mm
產品編號	規格	D	J	T	PP
PP					
-	1/2	20	-	-	-
-	3/4	25	-	-	-
-	1	32	-	-	-
-	1-1/4	40	-	-	-
-	1-1/2	50	-	-	-
-	2	63	-	-	-
-	2-1/2	75	-	-	-
-	3	90	-	-	-
-	4	110	-	-	-
BE201-1	6	160	53	5	✓
BE202-1	8	200	45	5	✓
-	10	250	-	-	-
-	12	315	-	-	-



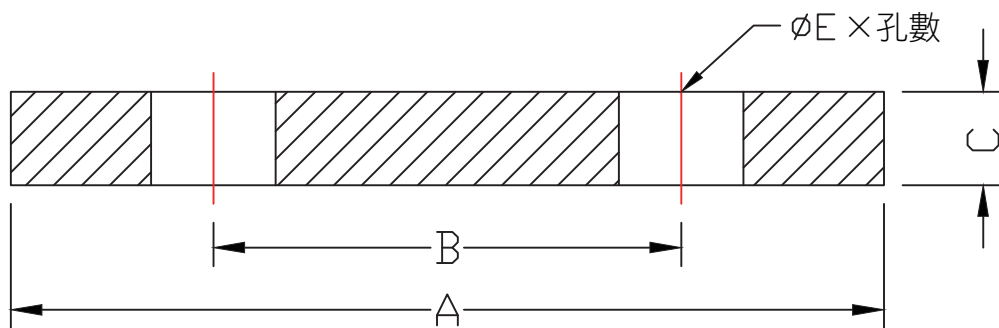


日規-大月彎				
單位:mm				
產品編號	規格	D	T	PP
* BF101-1	4	114	4	√
* BF102-1	5	140	4	√
* BF103-1	6	165	5	√
* BF104-1	8	216	5.5	√
* BF105-1	10	267	5.5	√
△ BF106-1	12	318	5.5	√

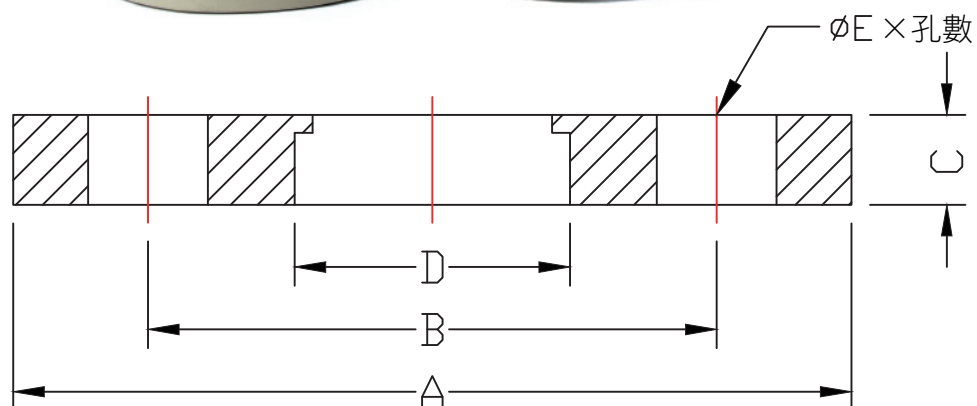
\*一體成形  
△兩片合成

德規-大月彎				
單位:mm				
產品編號	規格	D	T	PP
* BF201-1	3	90	4	√
* BF202-1	4	110	4	√
* BF203-1	6	160	5	√
* BF204-1	8	200	5.5	√
△ BF205-1	10	250	5.5	√
△ BF206-1	12	315	5.5	√
△ BF207-1	14	355	5.5	√
-	16	-	-	-

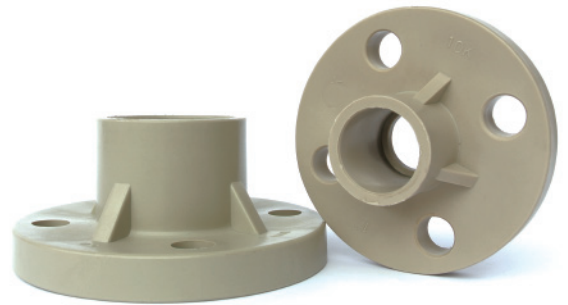
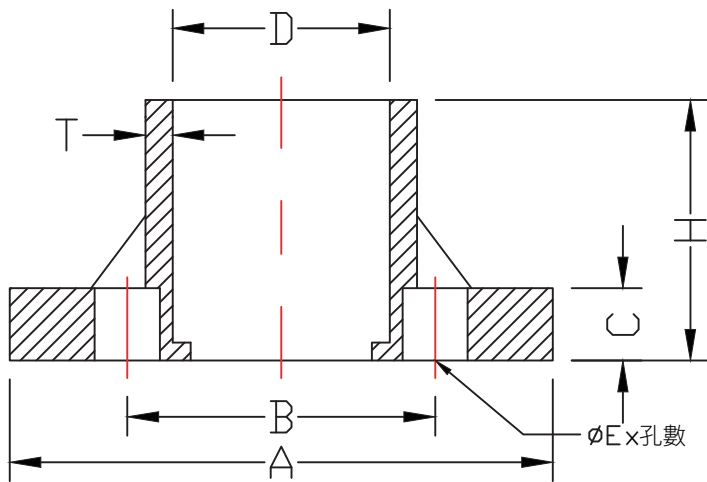
\*一體成形  
△兩片合成



日規-盲法蘭						
						單位:mm
產品編號	規格	A	B	C	ΦE×孔數	PP
CA101-1	1/2	95	70	15	Φ 14×4	√
CA102-1	3/4	100	75	15	Φ 15×4	√
CA103-1	1	120	86	16	Φ 17×4	√
CA104-1	1-1/4	133	99	17	Φ 18×4	√
CA105-1	1-1/2	139	105	17	Φ 18×4	√
CA106-1	2	155	119	18	Φ 18×4	√
CA107-1	2-1/2	172	135	19	Φ 18×4	√
CA108-1	3	180	146	20	Φ 18×8	√
CA109-1	4	207	173	22	Φ 19×8	√



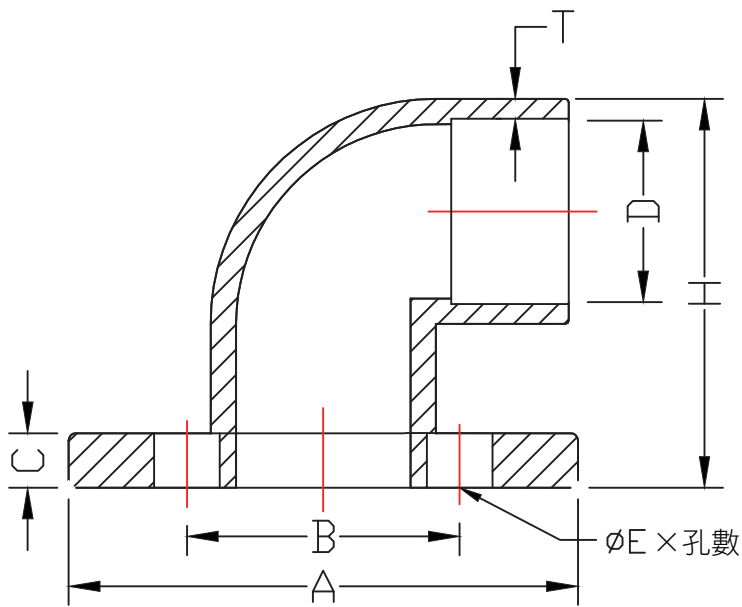
日規-焊接法蘭							單位:mm
產品編號	規格	D	A	B	C	ΦE×孔數	PP
CB101-1	1/2	22	95	70	14	Φ 14×4	√
CB102-1	3/4	27	100	75	15	Φ 15×4	√
CB103-1	1	34	120	86	16	Φ 17×4	√
CB104-1	1-1/4	42	133	99	16	Φ 18×4	√
CB105-1	1-1/2	48	139	105	17	Φ 18×4	√
CB106-1	2	60	155	119	19	Φ 18×4	√
CB107-1	2-1/2	76	172	135	19	Φ 18×4	√
CB108-1	3	89	180	146	22	Φ 18×8	√
CB109-1	4	114	207	173	23	Φ 19×8	√
CB110-1	5	140	249	209	25	Φ 22×8	√
CB111-1	6	165	279	239	26	Φ 22×8	√
CB112-1	8	216	329	289	27	Φ 22×12	√



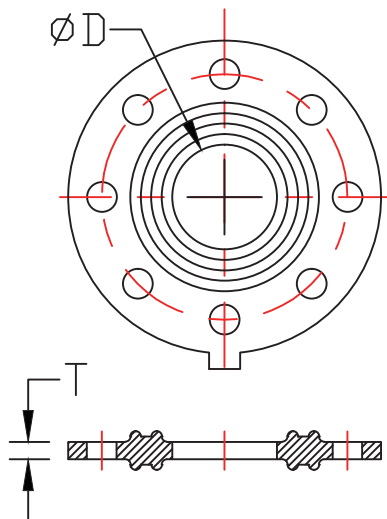
日規-法蘭									單位:mm
產品編號	規格	D	A	B	T	C	H	$\text{ØE} \times \text{孔數}$	PP
PP									
CC101-1	1/2	22	95	70	5	14	34	$\text{Ø} 14 \times 4$	✓
CC102-1	3/4	27	100	75	5	15	39	$\text{Ø} 15 \times 4$	✓
CC103-1	1	34	120	86	5	16	50	$\text{Ø} 17 \times 4$	✓
CC104-1	1-1/4	42	133	99	6	16	50	$\text{Ø} 18 \times 4$	✓
CC105-1	1-1/2	48	139	105	6.5	17	60	$\text{Ø} 18 \times 4$	✓
CC106-1	2	60	155	119	6.5	19	68	$\text{Ø} 18 \times 4$	✓
CC107-1	2-1/2	76	172	135	6.5	19	68	$\text{Ø} 18 \times 4$	✓
CC108-1	3	89	180	146	7	22	70	$\text{Ø} 18 \times 8$	✓
CC109-1	4	114	207	173	8	23	86	$\text{Ø} 19 \times 8$	✓
CC110-1	5	140	249	209	8	25	95	$\text{Ø} 22 \times 8$	✓
CC111-1	6	165	279	239	9.5	26	106	$\text{Ø} 22 \times 8$	✓

德規-法蘭									單位:mm
產品編號	規格	D	A	B	T	C	H	$\text{ØE} \times \text{孔數}$	PP
PP									
CC201-1	8	200	329	289	9.5	27	106	$\text{Ø} 22 \times 12$	✓

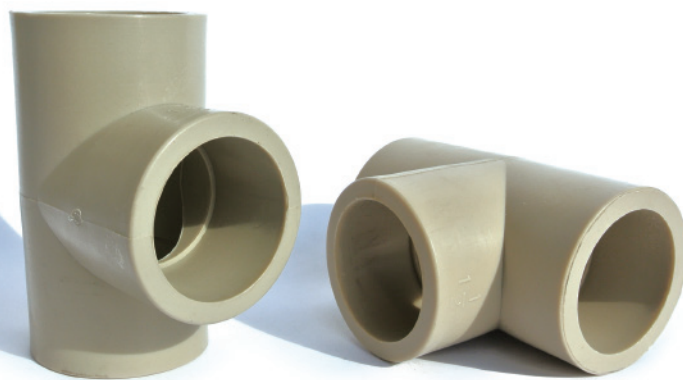
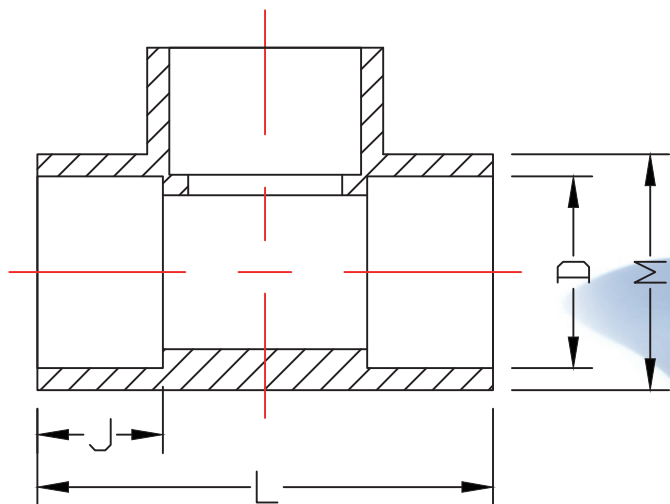
# 彎頭法蘭、橡膠墊片



日規-彎頭法蘭									
									單位:mm
產品編號	規格	D	T	A	B	C	H	ΦE×孔數	PP
CD101-1	1-1/2	48	7	140	105	17	107	Φ18×4	√
CD102-1	2	60	7	155	120	19	127	Φ18×4	√



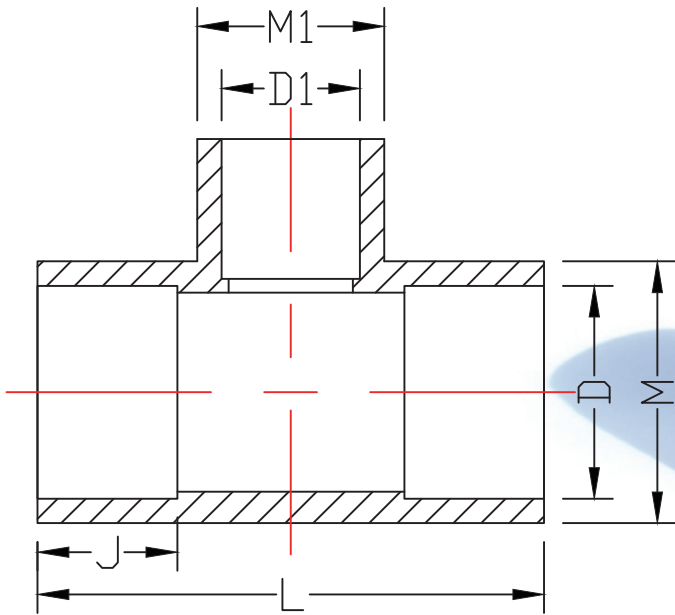
日規-橡膠墊片				
				單位:mm
產品編號	規格	D	T	材質
CE101-1	1/2	22	3	EPDM
CE102-1	3/4	27	3	EPDM
CE103-1	1	34	3	EPDM
CE104-1	1-1/4	42	3	EPDM
CE105-1	1-1/2	48	3	EPDM
CE106-1	2	60	3	EPDM
CE107-1	2-1/2	76	3	EPDM
CE108-1	3	89	3	EPDM
CE109-1	4	114	3	EPDM
CE110-1	5	140	3	EPDM
CE111-1	6	165	3	EPDM
CE112-1	8	216	5	EPDM



日規-三通(套接)							單位:mm
產品編號	規格	D	M	J	L	PP	
PP							
DA101-1	1/2	22	29	20	67	✓	
DA102-1	3/4	27	36	24	93	✓	
DA103-1	1	34	43	27	96	✓	
DA104-1	1-1/4	42	52	30	110	✓	
DA105-1	1-1/2	48	60	32	113	✓	
DA106-1	2	60	73	35	137	✓	
DA107-1	2-1/2	76	89	35	163	✓	
DA108-1	3	89	102	35	170	✓	
DA109-1	4	114	127	40	213	✓	
DA110-1	5	140	151	40	223	✓	
DA111-1	6	165	176	40	250	✓	
DA112-1	8	216	227	40	313	✓	
-	10	267	-	-	-	-	
-	12	318	-	-	-	-	

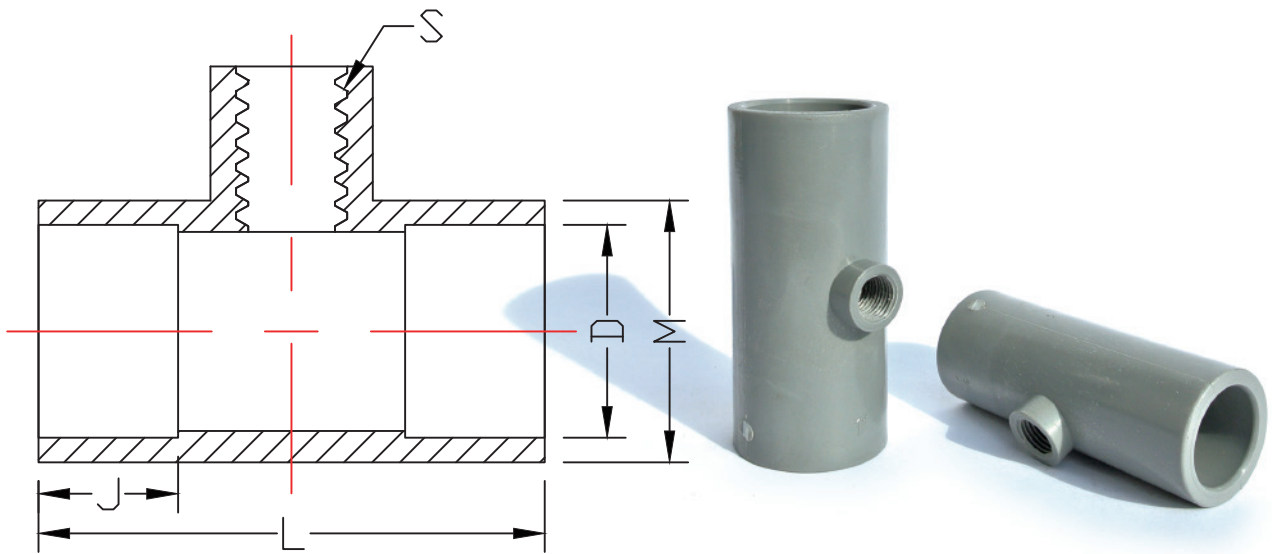
德規-三通(套接)							單位:mm
產品編號	規格	D	M	J	L	PP	
PP							
-	1/2	20	-	-	-	-	
-	3/4	25	-	-	-	-	
-	1	32	-	-	-	-	
-	1-1/4	40	-	-	-	-	
DA201-1	1-1/2	50	63.6	32	113	✓	
DA202-1	2	63	80.4	35	137	✓	
-	2-1/2	75	-	-	-	-	
-	3	90	-	-	-	-	
-	4	110	-	-	-	-	
-	6	160	-	-	-	-	
-	8	200	-	-	-	-	
-	10	250	-	-	-	-	
-	12	315	-	-	-	-	

# 異徑三通(套接)

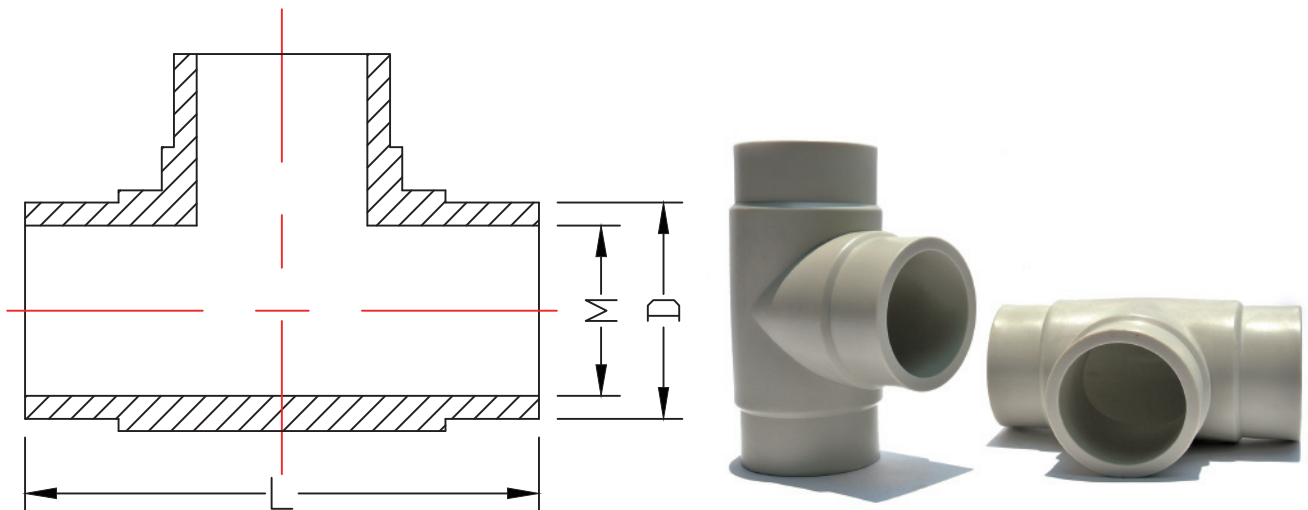


日規-異徑三通(套接)								單位:mm
產品編號	規格	D	D1	M	M1	J	L	PP
DB101-1	3/4 × 1/2	27	22	36	29	24	93	√
DB102-1	1 × 1/2	34	22	43	29	27	96	√
DB103-1	1 × 3/4	34	27	43	36	27	96	√
DB104-1	1 1/4 × 1/2	42	22	52	29	30	110	√
DB105-1	1 1/4 × 3/4	42	27	52	36	30	110	√
DB106-1	1 1/4 × 1	42	34	52	43	30	110	√
DB107-1	1 1/2 × 1/2	48	22	60	29	32	113	√
DB108-1	1 1/2 × 3/4	48	27	60	36	32	113	√
DB109-1	1 1/2 × 1	48	34	60	43	32	113	√
DB110-1	1 1/2 × 1 1/4	48	42	60	52	32	113	√
DB111-1	2 × 1/2	60	22	73	29	35	137	√
DB112-1	2 × 3/4	60	27	73	36	35	137	√
DB113-1	2 × 1	60	34	73	43	35	137	√
DB114-1	2 × 1 1/4	60	42	73	52	35	137	√
DB115-1	2 × 1 1/2	60	48	73	60	35	137	√
DB116-1	2 1/2 × 1 1/2	76	48	89	60	35	163	√
DB117-1	2 1/2 × 2	76	60	89	73	35	163	√
DB118-1	3 × 2	89	60	102	73	35	170	√
DB119-1	3 × 2 1/2	89	76	102	89	35	170	√

德規-異徑三通(套接)								單位:mm
產品編號	規格	D	D1	M	M1	J	L	PP
-	3/4 × 1/2	25	20	-	-	-	-	-
-	1 × 1/2	32	20	-	-	-	-	-
-	1 × 3/4	32	25	-	-	-	-	-
-	1 1/4 × 1/2	40	20	-	-	-	-	-
-	1 1/4 × 3/4	40	25	-	-	-	-	-
-	1 1/4 × 1	40	32	-	-	-	-	-
DB201-1	1 1/2 × 1/2	50	20	63.6	33.6	32	113	√
DB202-1	1 1/2 × 3/4	50	25	63.6	35	32	113	√
DB203-1	1 1/2 × 1	50	32	63.6	43.4	32	113	√
DB204-1	1 1/2 × 1 1/4	50	40	63.6	52	32	113	√
DB205-1	2 × 1/2	63	20	80.4	33.6	35	137	√
DB206-1	2 × 3/4	63	25	80.4	35	35	137	√
DB207-1	2 × 1	63	32	80.4	43	35	137	√
DB208-1	2 × 1 1/4	63	40	80.4	52	35	137	√
DB209-1	2 × 1 1/2	63	50	80.4	63.4	35	137	√
-	2 1/2 × 1 1/2	75	50	-	-	-	-	-
-	2 1/2 × 2	75	63	-	-	-	-	-
-	3 × 2	90	63	-	-	-	-	-
-	3 × 2 1/2	90	75	-	-	-	-	-

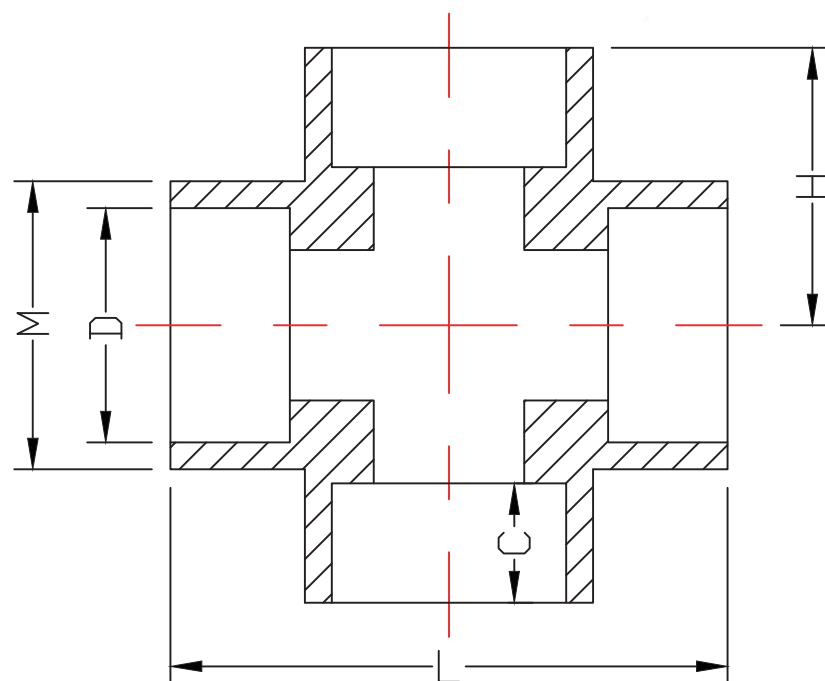
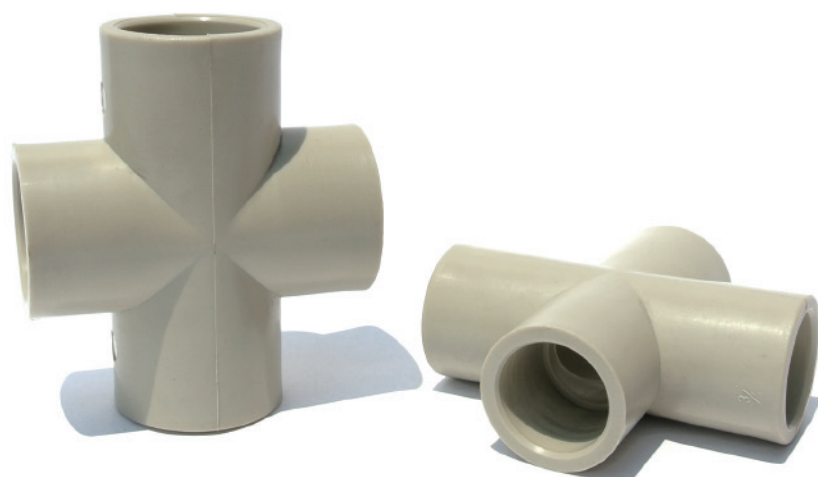


日規-異徑三通(內牙)								單位:mm	
產品編號		規格	D	S×牙數	M	J	L	PP	PVC
PP	PVC								
DC101-1	DC101-2	3/4 × 1/4	27	PT 1/4×19	36	24	93	-	✓
DC102-1	DC102-2	1 × 1/4	34	PT 1/4×19	43	27	96	-	✓

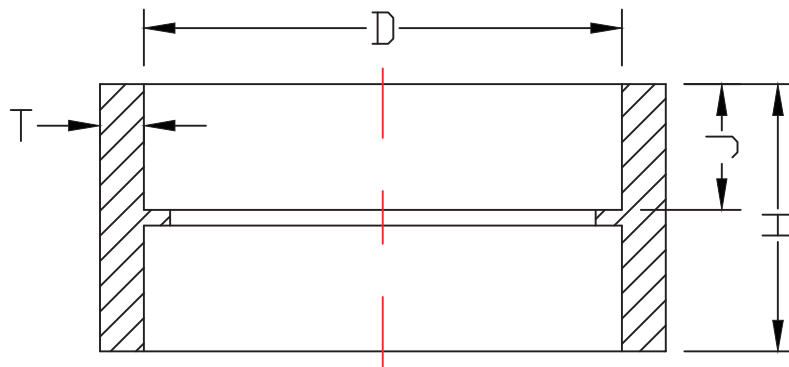


德規-三通(對接)						單位:mm
產品編號	規格	D	M	L	PP	
PP						
DD201-1	1-1/2	50	41	135	✓	
DD202-1	2	63	51	143	✓	



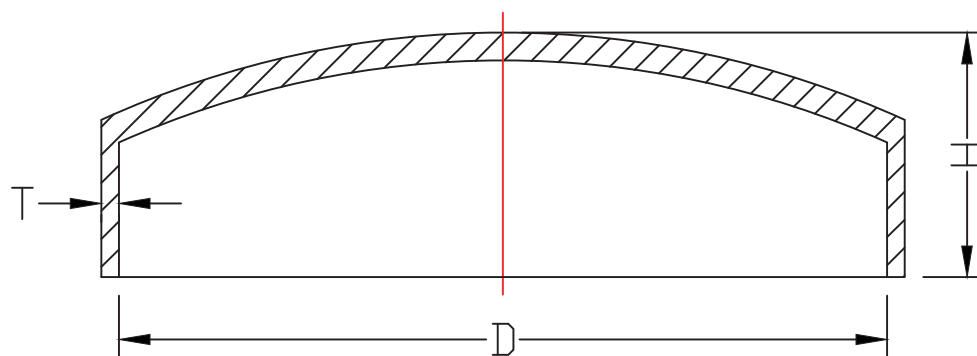


日規-四通							單位:mm
產品編號	規格	D	M	H	L	C	PP
PP							
-	1/2	22	-	-	-	-	-
EA101-1	3/4	27	36	46	92	25	✓
EA102-1	1	34	43	48	96	25	✓
EA103-1	1-1/2	48	61	60	120	33	✓
EA104-1	2	60	73	70	140	35	✓
-	2-1/2	76	-	-	-	-	-
-	3	89	-	-	-	-	-
-	4	114	-	-	-	-	-



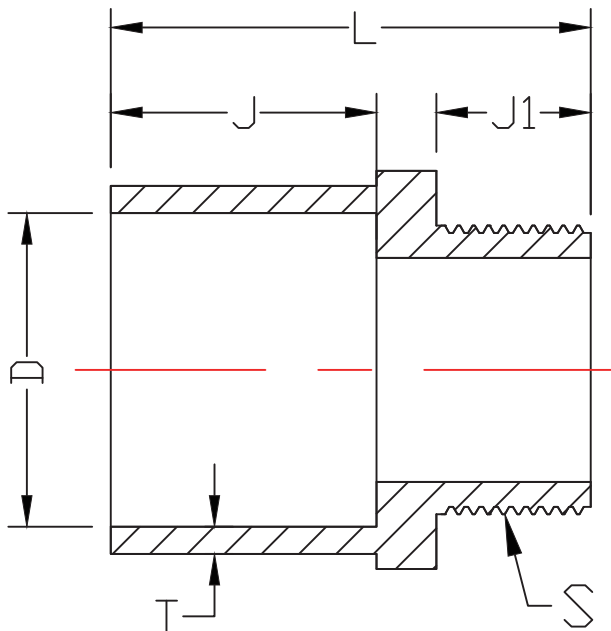
日規-平接頭(同徑)							單位:mm
產品編號	規格	D	T	J	H	PP	
PP							
FA101-1	1/2	22	4	20	42	✓	
FA102-1	3/4	27	4	24	52	✓	
FA103-1	1	34	4	28	58	✓	
FA104-1	1-1/4	42	4	30	60	✓	
FA105-1	1-1/2	48	5	35	74	✓	
FA106-1	2	60	5	40	84	✓	
FA107-1	2-1/2	76	5	40	84	✓	
FA108-1	3	89	5	40	84	✓	
FA109-1	4	114	5	40	85	✓	
FA110-1	5	140	5	40	85	✓	
FA111-1	6	165	5	40	85	✓	
FA112-1	8	216	5	40	85	✓	
FA113-1	10	267	5	40	85	✓	
FA114-1	12	318	5	45	96	✓	

德規-平接頭(同徑)							單位:mm
產品編號	規格	D	T	J	H	PP	
PP							
-	1/2	20	-	-	-	-	
-	3/4	25	-	-	-	-	
-	1	32	-	-	-	-	
-	1-1/4	40	-	-	-	-	
FA201-1	1-1/2	50	6.8	35	74	✓	
FA202-1	2	63	8.5	40	84	✓	
FA203-1	2-1/2	75	9	40	84	✓	
FA204-1	3	90	10.5	40	84	✓	
FA205-1	4	110	11.5	40	85	✓	
FA206-1	6	160	5.5	40	85	✓	
FA207-1	8	200	5	40	85	✓	
FA208-1	10	250	5	40	85	✓	
FA209-1	12	315	5	45	96	✓	



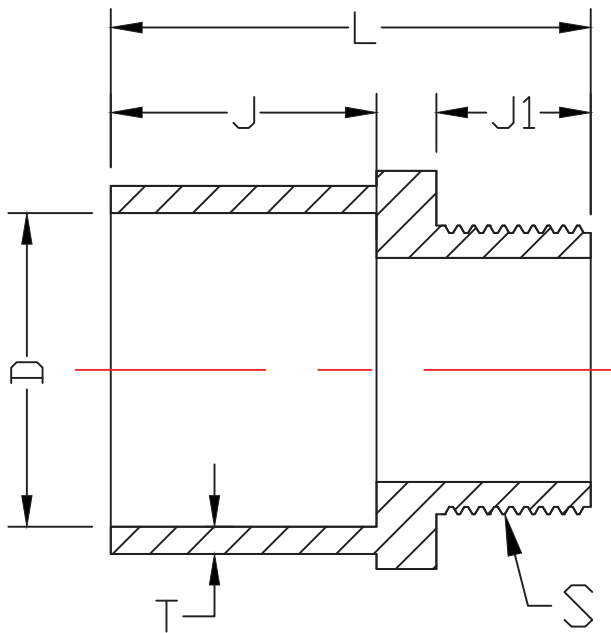
日規-管帽					
					單位:mm
產品編號	規格	D	T	H	PP
PP					
FB101-1	1/2	22	3.5	26	✓
FB102-1	3/4	27	4	31	✓
FB103-1	1	34	4.5	34	✓
FB104-1	1-1/4	42	4.5	36	✓
FB105-1	1-1/2	48	5	44	✓
FB106-1	2	60	5	49	✓
FB107-1	2-1/2	76	5	70	✓
FB108-1	3	89	5	70	✓
FB109-1	4	114	5	58	✓
FB110-1	5	140	5.5	62	✓
FB111-1	6	165	5.5	68	✓
FB112-1	8	216	5.5	72	✓
FB113-1	10	267	5.5	72	✓
-	12	318	-	-	-

德規-管帽					
					單位:mm
產品編號	規格	D	T	H	PP
PP					
-	1/2	20	-	-	-
-	3/4	25	-	-	-
-	1	32	-	-	-
-	1-1/4	40	-	-	-
FB201-1	1-1/2	50	6.8	44	✓
FB202-1	2	63	8.5	49	✓
FB203-1	2-1/2	75	9	70	✓
FB204-1	3	90	10.5	70	✓
FB205-1	4	110	11.5	58	✓
FB206-1	6	160	5.3	68	✓
FB207-1	8	200	5.4	72	✓
FB208-1	10	250	5.2	72	✓
-	12	315	-	-	-

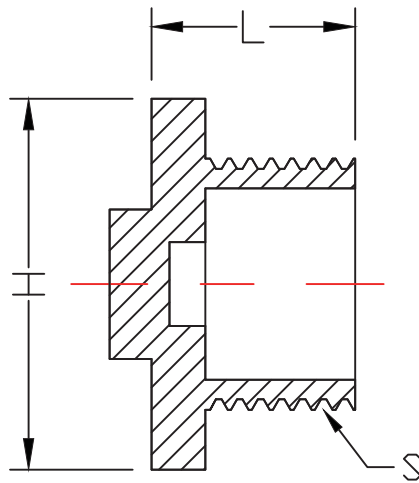
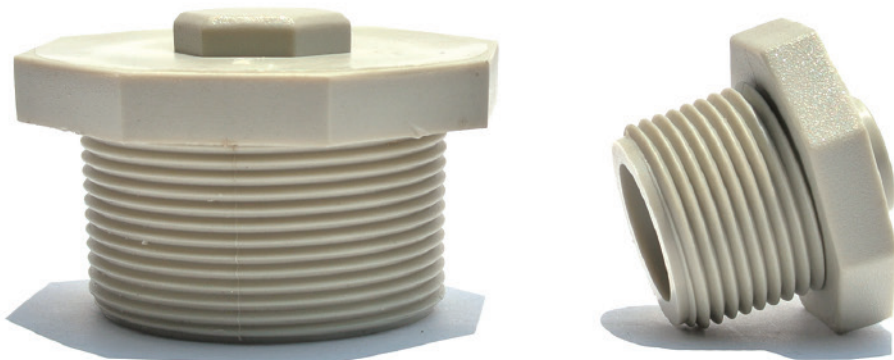


日規-外牙閥接頭(套接)										單位:mm
產品編號		規格	D	S×牙數	T	J	J1	L	PP	PVC
PP	PVC									
GA101-1	GA101-2	1/2	22	PT 1/4×19	4	30	18.5	45	✓	✓
GA102-1	GA102-2			PT 3/8×19	4	30	18.5	45	✓	✓
GA103-1	GA103-2			PT 1/2×14	4	30	18.5	55	✓	✓
GA104-1	GA104-2	3/4	27	PT 3/4×14	4.5	35	20	63	✓	-
GA105-1	GA105-2	1	34	PT 1×11	5	40	22.5	73	✓	-
GA106-1	GA106-2	1-1/4	42	PT 1¼×11	5.5	40	25	73	✓	-
GA107-1	GA107-2	1-1/2	48	PT 1½×11	6	45	25	80	✓	-
GA108-1	GA108-2	2	60	PT 2×11	6.5	45	30	83	✓	-
GA109-1	GA109-2	2-1/2	76	PT 2½×11	6.5	58	35	103	✓	-
GA110-1	GA110-2	3	89	PT 3×11	6.5	70	40	123	✓	-
GA111-1	GA111-2	4	114	PT 4×11	6.5	70	45	128	✓	-

## 外牙閥接頭(套接)

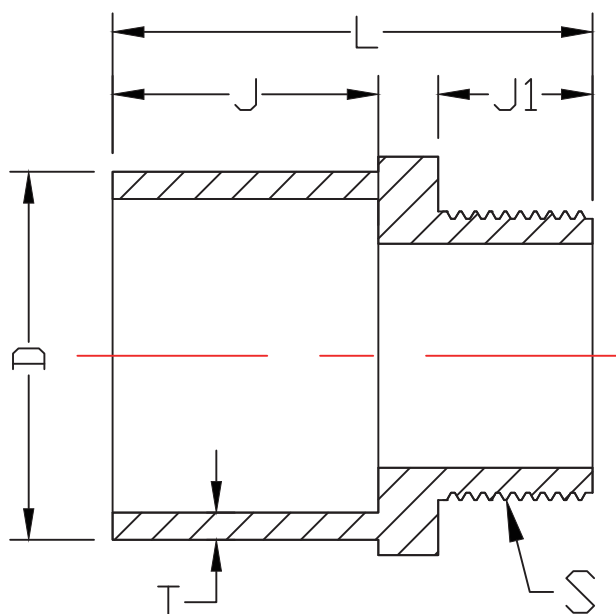


德規-外牙閥接頭(套接)										單位:mm
產品編號		規格	D	S×牙數	T	J	J1	L	PP	PVC
PP	PVC									
-	-	1/2	20	-	-	-	-	-	-	-
-	-	3/4	25	-	-	-	-	-	-	-
-	-	1	32	-	-	-	-	-	-	-
-	-	1-1/4	40	-	-	-	-	-	-	-
GA201-1	GA201-2	1-1/2	50	PT 1½×11	7	40	25	73	√	-
GA202-1	GA202-2	2	63	PT 2×11	8	45	30	83	√	-
-	-	2-1/2	75	-	-	-	-	-	-	-
-	-	3	90	-	-	-	-	-	-	-
-	-	4	110	-	-	-	-	-	-	-

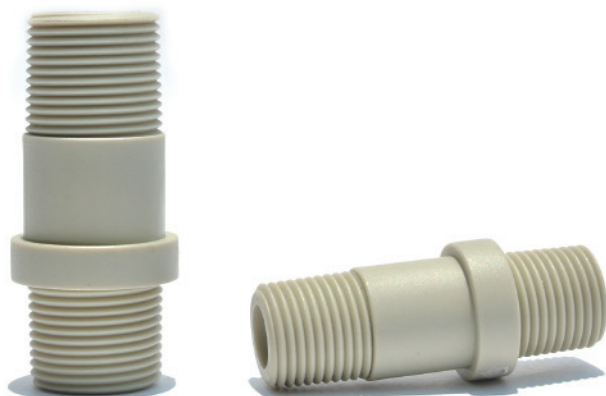
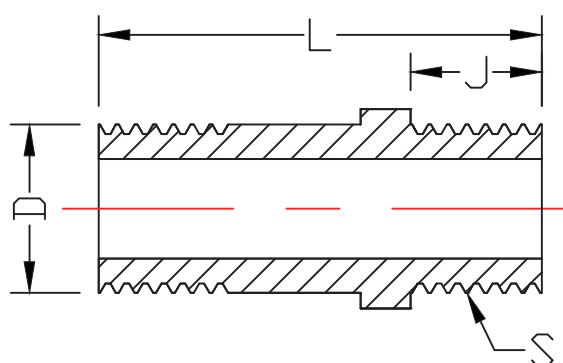


日規-外牙塞頭							單位:mm
產品編號		規格	S×牙數	L	H	PP	PVC
PP	PVC						
GB101-1	GB101-2	1/8	PT 1/8×28	19	11	✓	✓
GB102-1	GB102-2	1/4	PT 1/4×19	19	14	✓	✓
GB103-1	GB103-2	3/8	PT 3/8×19	20	19	✓	✓
GB104-1	GB104-2	1/2	PT 1/2×14	25	31	✓	-
GB105-1	GB105-2	3/4	PT 3/4×14	29	37	✓	-
GB106-1	GB106-2	1	PT 1×11	31	45	✓	-
GB107-1	GB107-2	1-1/4	PT 1¼×11	33	53	✓	-
GB108-1	GB108-2	1-1/2	PT 1½×11	34	74	✓	-
GB109-1	GB109-2	2	PT 2×11	40	74	✓	-
GB110-1	GB110-2	2-1/2	PT 2½×11	47	89	✓	-
GB111-1	GB111-2	3	PT 3×11	50	102	✓	-
GB112-1	GB112-2	4	PT 4×11	57	127	✓	-

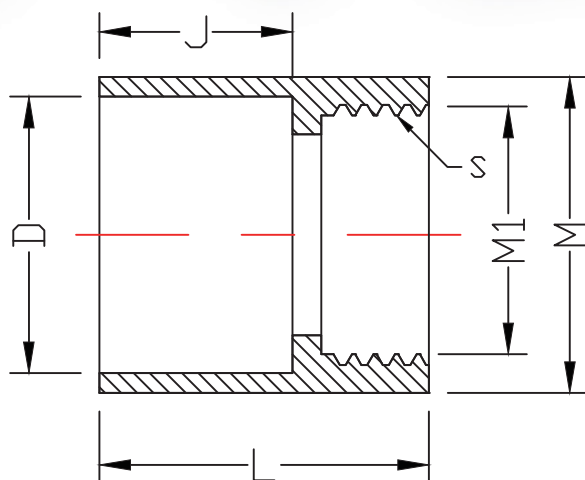
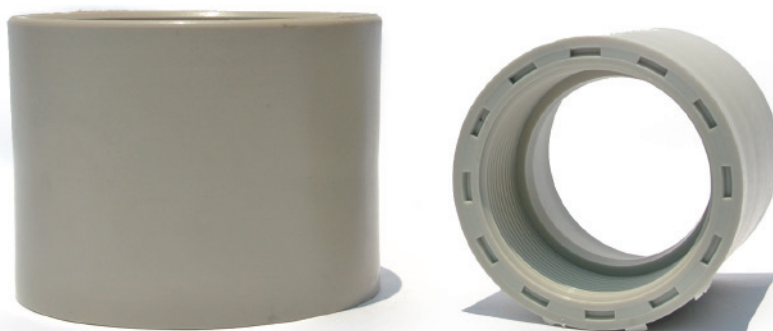
## 外牙閥接頭(對接)、雙外牙接頭



德規-外牙閥接頭(對接)										單位:mm
產品編號		規格	D	S×牙數	T	J	J1	L	PP	PVC
PP	PVC									
GC201-1	GC201-2	1-1/2	50	PT 1½×11	5	22	30	60	√	-
GC202-1	GC201-2	2	63	PT 2×11	6	22	30	60	√	-



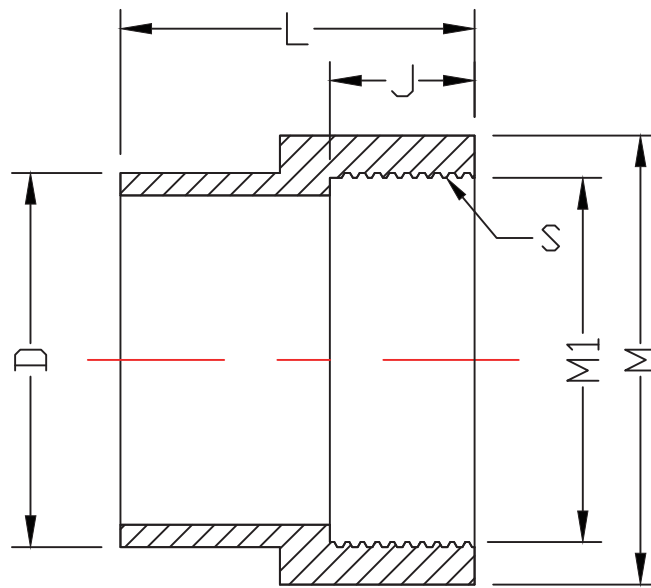
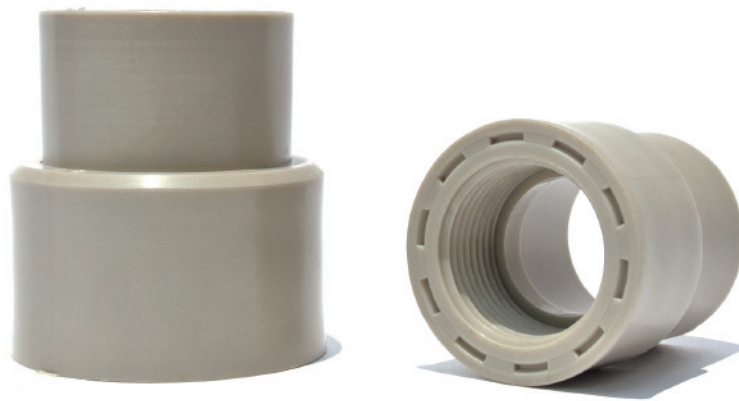
日規-雙外牙接頭									單位:mm
產品編號		規格	D	S×牙數	J	L	PP	PVC	
PP	PVC								
GD101-1	GD101-2	1/2	22	PT 1/2×14	20	65	√	-	
GD102-1	GD102-2	3/4	27	PT 3/4×14	20	70	√	-	
GD103-1	GD103-2	1	34	PT 1×11	24	74	√	-	



日規-內牙接頭(套接)										單位:mm
產品編號		規格	D	S×牙數	M	M1	J	L	PP	PVC
PP	PVC									
HA101-1	HA101-2	1/2	22	PT 1/4×19	29	20	30	50	✓	✓
HA102-1	HA102-2		22	PT 3/8×19	29	20	30	50	✓	✓
HA103-1	HA103-2		22	PT 1/2×14	35	20	30	50	✓	✓
HA104-1	HA104-2	3/4	27	PT 3/4×14	39	24	30	52	✓	-
HA105-1	HA105-2	1	34	PT 1×11	47	31	30	53	✓	-
HA106-1	HA106-2	1-1/4	42	PT 1¼×11	52	39	32	59	✓	-
HA107-1	HA107-2	1-1/2	48	PT 1½×11	60	45	37	67	✓	-
HA108-1	HA108-2	2	60	PT 2×11	73	57	37	67	✓	-
HA109-1	HA109-2	2-1/2	76	PT 2½×11	89	73	37	73	✓	-
HA110-1	HA110-2	3	89	PT 3×11	102	87	37	76	✓	-
HA111-1	HA111-2	4	114	PT 4×11	129	111	38	84	✓	-



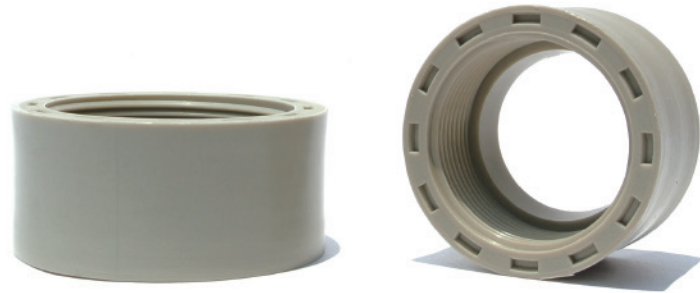
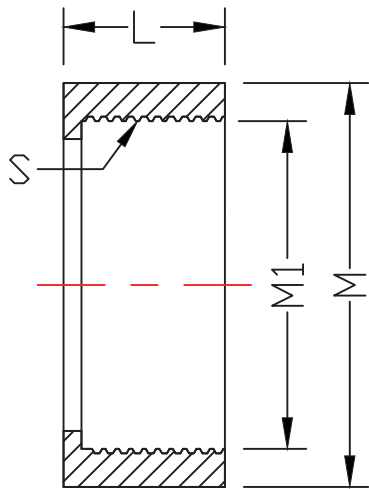
# 內牙接頭(對接)



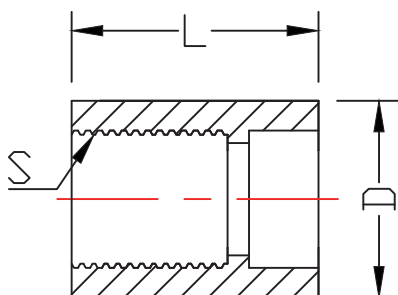
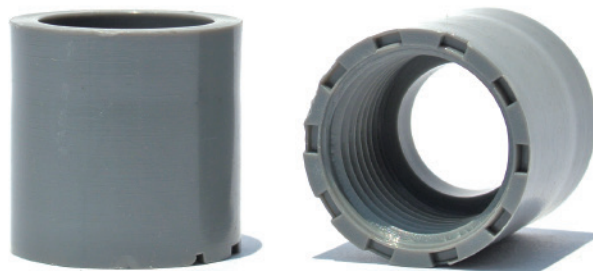
日規-內牙接頭(對接)

單位:mm

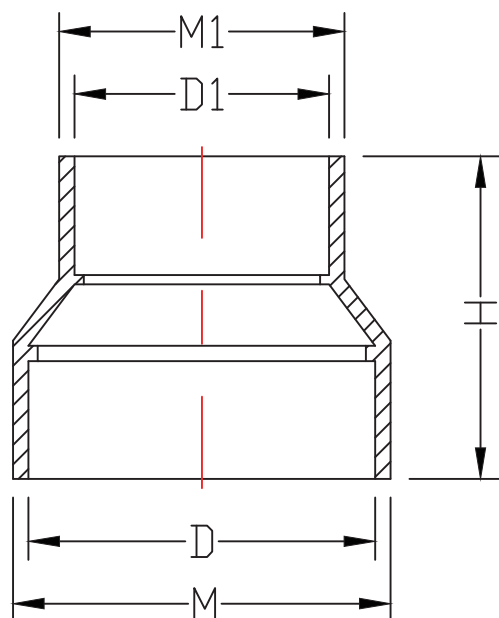
產品編號		規格	D	S×牙數	M	M1	J	L	PP	PVC
PP	PVC									
-	-	1/2	22	PT 1/2×14	-	-	-	-	-	-
HB101-1	HB101-2	3/4	27	PT 3/4×14	39	24	20	51	✓	-
HB102-1	HB102-2	1	34	PT 1×11	47	31	22.5	65	✓	-
-	-	1-1/4	42	PT 1¼×11	-	-	-	-	-	-
HB103-1	HB103-2	1-1/2	48	PT 1½×11	60	45	25	65	✓	-
HB104-1	HB104-2	2	60	PT 2×11	73	57	30	65	✓	-
HB105-1	HB105-2	2-1/2	76	PT 2½×11	89	73	35	70	✓	-
HB106-1	HB106-2	3	89	PT 3×11	102	87	40	75	✓	-
-	-	4	114	PT 4×11	-	-	-	-	-	-



日規-內牙接頭(短)								
產品編號		規格	S×牙數	M	M1	L	PP	PVC
PP	PVC							
HC101-1	HC101-2	1/2	PT 1/2×14	27	21	23	✓	-
-	-	3/4	PT 3/4×14	-	-	-	-	-
-	-	1	PT 1×11	-	-	-	-	-
-	-	1-1/4	PT 1 1/4×11	-	-	-	-	-
HC102-1	HC102-2	1-1/2	PT 1 1/2×11	60	45	34	✓	-
HC103-1	HC103-2	2	PT 2×11	73	57	35	✓	-
HC104-1	HC104-2	2-1/2	PT 2 1/2×11	89	73	37	✓	-
HC105-1	HC105-2	3	PT 3×11	102	87	40	✓	-
HC106-1	HC106-2	4	PT 4×11	129	111	45	✓	-



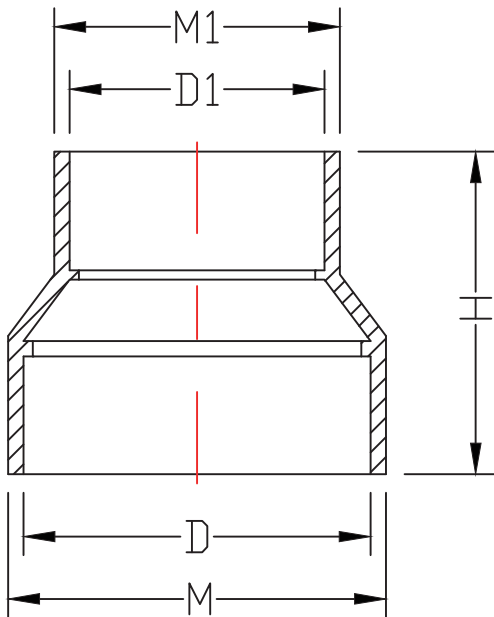
日規-內牙接頭(三通用)							
產品編號		規格	D	S×牙數	L	PP	PVC
PP	PVC						
HD101-1	HD101-2	1/2	22	PT 1/4×19	28	✓	✓
HD102-1	HD102-2		22	PT 3/8×19	28	✓	✓
HD103-1	HD103-2	3/4	26	PT 1/2×14	26	✓	✓



日規-長型大小接頭

單位:mm

產品編號	規格	D	D1	M	M1	H	PP	產品編號	規格	D	D1	M	M1	H	PP
JA101-1	$\frac{3}{4} \times \frac{1}{2}$	27	22	35	30	58	✓	JA118-1	$3 \times 1\frac{1}{2}$	89	48	99	58	100	✓
JA102-1	$1 \times \frac{1}{2}$	34	22	42	30	62	✓	JA119-1	$3 \times 2$	89	60	99	70	100	✓
JA103-1	$1 \times \frac{3}{4}$	34	27	42	35	62	✓	JA120-1	$3 \times 2\frac{1}{2}$	89	76	99	86	100	✓
JA104-1	$1\frac{1}{4} \times \frac{1}{2}$	42	22	50	30	73	✓	JA121-1	$4 \times 1\frac{1}{2}$	114	48	124	58	103	✓
JA105-1	$1\frac{1}{4} \times \frac{3}{4}$	42	27	50	35	73	✓	JA122-1	$4 \times 2$	114	60	124	70	103	✓
JA106-1	$1\frac{1}{4} \times 1$	42	34	50	44	73	✓	JA123-1	$4 \times 2\frac{1}{2}$	114	76	124	86	103	✓
JA107-1	$1\frac{1}{2} \times \frac{1}{2}$	48	22	58	30	83	✓	JA124-1	$4 \times 3$	114	89	124	99	103	✓
JA108-1	$1\frac{1}{2} \times \frac{3}{4}$	48	27	58	35	83	✓	JA125-1	$5 \times 3$	140	89	150	99	115	✓
JA109-1	$1\frac{1}{2} \times 1$	48	34	58	44	83	✓	JA126-1	$5 \times 4$	140	114	150	124	100	✓
JA110-1	$1\frac{1}{2} \times 1\frac{1}{4}$	48	42	58	50	83	✓	JA127-1	$6 \times 4$	165	114	175	124	115	✓
JA111-1	$2 \times \frac{1}{2}$	60	22	70	30	97	✓	JA128-1	$6 \times 5$	165	140	175	150	105	✓
JA112-1	$2 \times \frac{3}{4}$	60	27	70	35	97	✓	JA129-1	$8 \times 4$	216	114	226	124	138	✓
JA113-1	$2 \times 1$	60	34	70	44	97	✓	JA130-1	$8 \times 5$	216	140	226	150	138	✓
JA114-1	$2 \times 1\frac{1}{4}$	60	42	70	50	97	✓	JA131-1	$8 \times 6$	216	165	226	175	120	✓
JA115-1	$2 \times 1\frac{1}{2}$	60	48	70	58	97	✓	JA132-1	$10 \times 8$	267	216	277	226	127	✓
JA116-1	$2\frac{1}{2} \times 1\frac{1}{2}$	76	48	86	58	100	✓								
JA117-1	$2\frac{1}{2} \times 2$	76	60	86	70	100	✓								

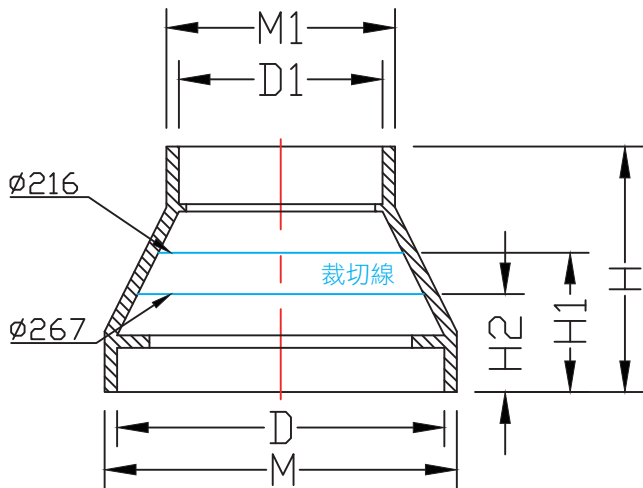


德規-長型大小接頭

單位:mm

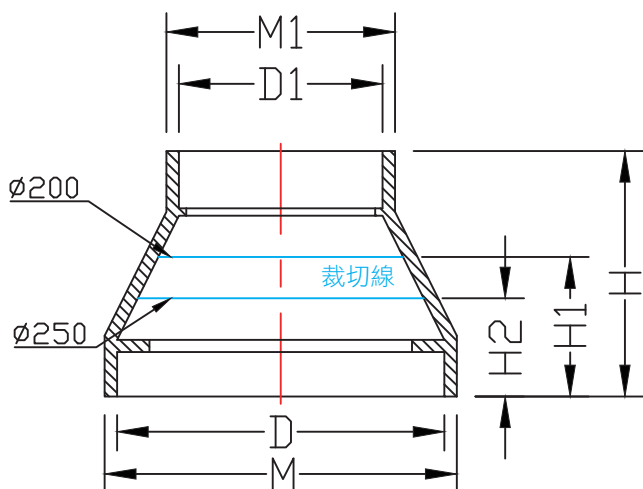
產品編號	規格	D	D1	M	M1	H	PP	產品編號	規格	D	D1	M	M1	H	PP
PP								PP							
-	3/4 x 1/2	25	20	-	-	-	-	JA212-1	3 x 1 1/2	90	50	110.8	63.6	100	√
-	1 x 1/2	32	20	-	-	-	-	JA213-1	3 x 2	90	63	110.8	80.4	100	√
-	1 x 3/4	32	25	-	-	-	-	JA214-1	3 x 2 1/2	90	75	110.8	93	100	√
-	1 1/4 x 1/2	40	20	-	-	-	-	JA215-1	4 x 1 1/2	110	50	134	63.6	103	√
-	1 1/4 x 3/4	40	25	-	-	-	-	JA216-1	4 x 2	110	63	134	80.4	103	√
-	1 1/4 x 1	40	32	-	-	-	-	JA217-1	4 x 2 1/2	110	75	134	93	103	√
JA201-1	1 1/2 x 1/2	50	20	63.6	30	83	√	JA218-1	4 x 3	110	90	134	111	103	√
JA202-1	1 1/2 x 3/4	50	25	63.6	36	83	√	JA219-1	5 x 3	140	90	150.8	100.8	115	√
JA203-1	1 1/2 x 1	50	32	63.6	43	83	√	JA220-1	5 x 4	140	110	150.8	120.8	100	√
JA204-1	1 1/2 x 1 1/4	50	40	63.6	51	83	√	JA221-1	6 x 4	160	110	170.4	120.4	115	√
JA205-1	2 x 1/2	63	20	80.4	30	97	√	JA222-1	6 x 5	160	140	170.4	150.4	105	√
JA206-1	2 x 3/4	63	25	80.4	36	97	√	JA223-1	8 x 4	200	110	210.6	120.6	138	√
JA207-1	2 x 1	63	32	80.4	43	97	√	JA224-1	8 x 5	200	140	210.6	150.6	138	√
JA208-1	2 x 1 1/4	63	40	80.4	51	97	√	JA225-1	8 x 6	200	160	210	170	120	√
JA209-1	2 x 1 1/2	63	50	80.4	63.6	97	√	JA226-1	8 x 6	200	165	210.6	175.6	120	√
JA210-1	2 1/2 x 1 1/2	75	50	93	63.6	100	√	JA227-1	10 x 8	250	200	260.6	210.6	127	√
JA211-1	2 1/2 x 2	75	63	93	80.4	100	√								

# 長型大小接頭(共用)



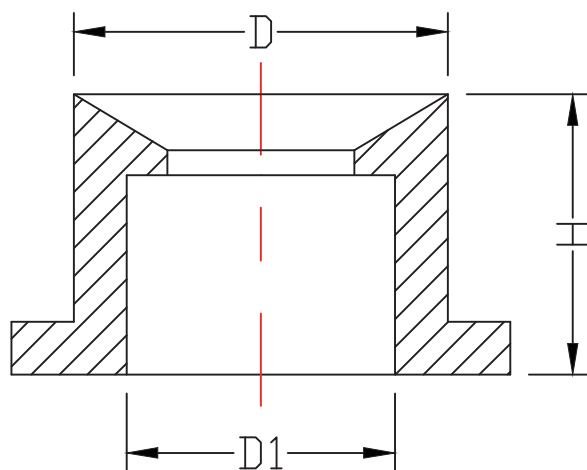
日規-長型大小接頭(共用)							單位:mm
產品編號	規格	D	D1	M	M1	H*	PP
PP							
JA134-1	12×6	318	165	328	175	210	V
	12×8	318	216	328	226	120	
	12×10	318	267	328	277	85	

規格 12x8和 12X10需自行裁切

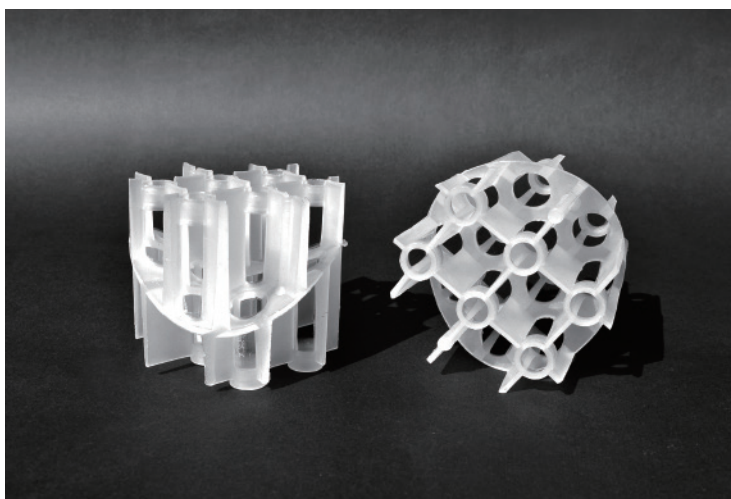


德規-長型大小接頭(共用)							單位:mm
產品編號	規格	D	D1	M	M1	H*	PP
PP							
JA229-1	12×6	315	160	325	170	210	V
	12×8	315	200	325	210	120	
	12×10	315	250	325	260	85	

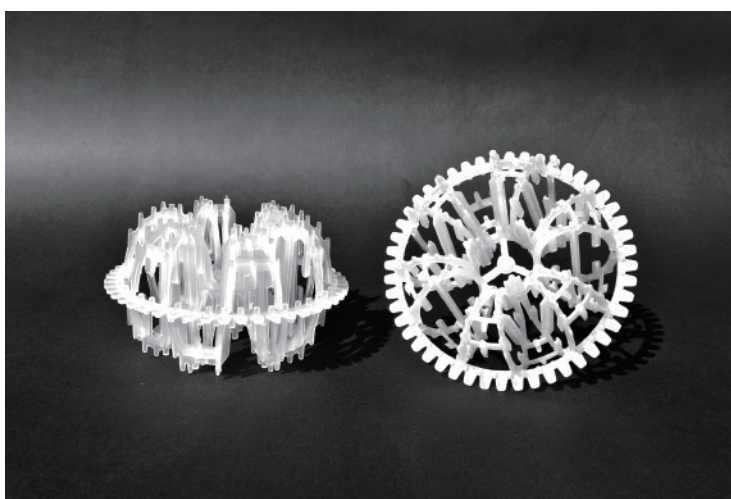
規格 12x8和 12X10需自行裁切



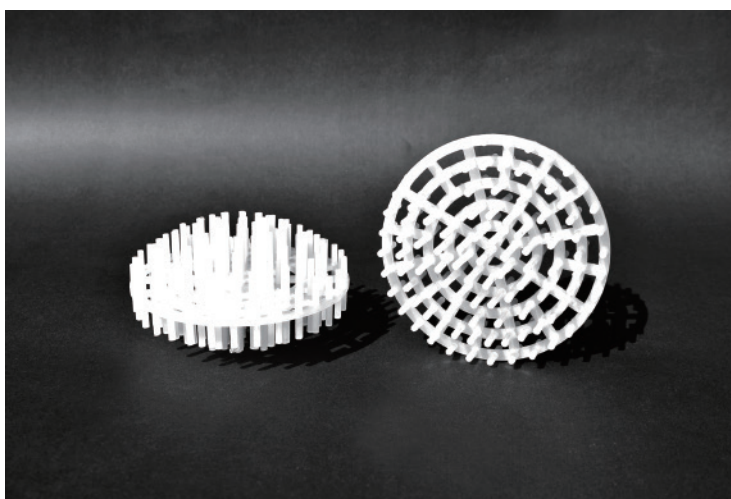
日規-短型大小接頭							單位:mm
產品編號		規格	D	D1	H	PP	PVC
PP	PVC						
JB101-1	JB101-2	1½ × ½	48	22	43	✓	-
JB102-1	JB102-2	1½ × ¾	48	27	43	✓	-
JB103-1	JB103-2	1½ × 1	48	34	43	✓	-
JB104-1	JB104-2	1½ × 1¼	48	42	43	✓	-
JB105-1	JB105-2	2 × ½	60	22	43	✓	-
JB106-1	JB106-2	2 × ¾	60	27	43	✓	-
JB107-1	JB107-2	2 × 1	60	34	43	✓	-
JB108-1	JB108-2	2 × 1¼	60	42	43	✓	-
JB109-1	JB109-2	2 × 1½	60	48	43	✓	-



拉西環-網狀型	
產品編號	KA101-1
規格	3"
尺寸(mm)	68×59
重量(kg/m <sup>3</sup> )	60
比表面積(m <sup>2</sup> /m <sup>3</sup> )	72
孔隙率(%)	93
填充個數(pcs/m <sup>3</sup> )	3200
PP	√



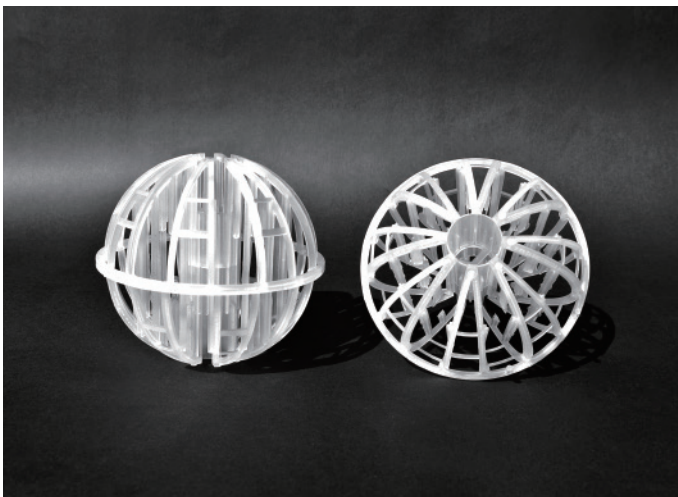
拉西環-六瓣型	
產品編號	KB101-1
規格	4"
尺寸(mm)	103×61
重量(kg/m <sup>3</sup> )	75
比表面積(m <sup>2</sup> /m <sup>3</sup> )	94
孔隙率(%)	90
填充個數(pcs/m <sup>3</sup> )	1900
PP	√



拉西環-海膽型	
產品編號	KC101-1
規格	3-1/2"
尺寸(mm)	86×51
重量(kg/m <sup>3</sup> )	62
比表面積(m <sup>2</sup> /m <sup>3</sup> )	72
孔隙率(%)	93
填充個數(pcs/m <sup>3</sup> )	3200
PP	√

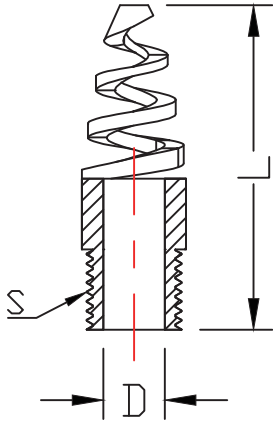


拉西環-皇冠型		
產品編號	KD101-1	KD102-1
規格	2"	6"
尺寸(mm)	56×46	140×138
重量(kg/m <sup>3</sup> )	57	48
比表面積(m <sup>2</sup> /m <sup>3</sup> )	100	52
孔隙率(%)	94	95
填充個數(pcs/m <sup>3</sup> )	7500	440
PP	√	√

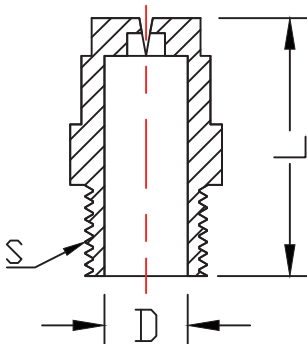
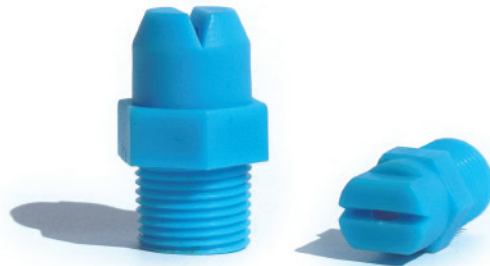


拉西環-地球型		
產品編號	KE101-1	KE102-1
規格	2"	4"
尺寸(mm)	51×45	98×90
重量(kg/m <sup>3</sup> )	71	47
比表面積(m <sup>2</sup> /m <sup>3</sup> )	155	163
孔隙率(%)	93	95
填充個數(pcs/m <sup>3</sup> )	13500	1500
PP	√	√

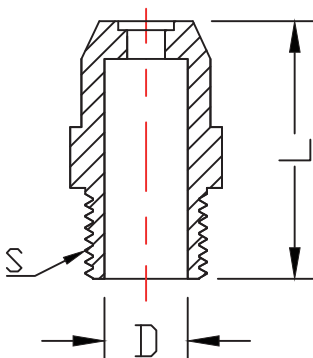




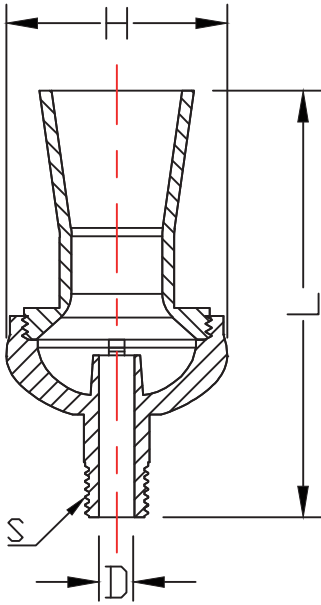
螺旋型噴水頭								單位:mm
產品編號		S×牙數	下孔徑	D	L	PP	PVC	
PP	PVC							
LA101-1	LA101-2	PT 1/2×14	18.1	13	67	√	√	



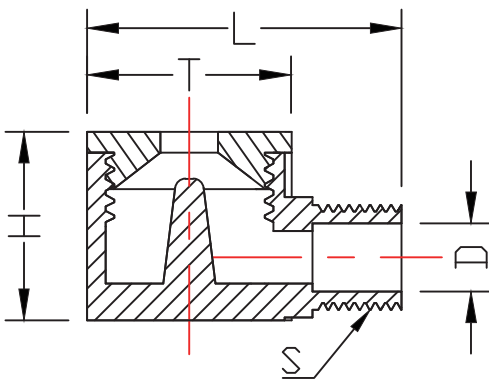
一字型噴水頭								單位:mm
產品編號		S×牙數	下孔徑	D	L	PP	PVC	
PP	PVC							
LB101-1	LA101-2	PT 1/4×19	11	8.5	26	√	-	
LB102-1	LA102-2	PT 3/8×19	14.5	11	33	√	-	
LB103-1	LA103-2	PT 3/4×14	23	13	40	√	-	



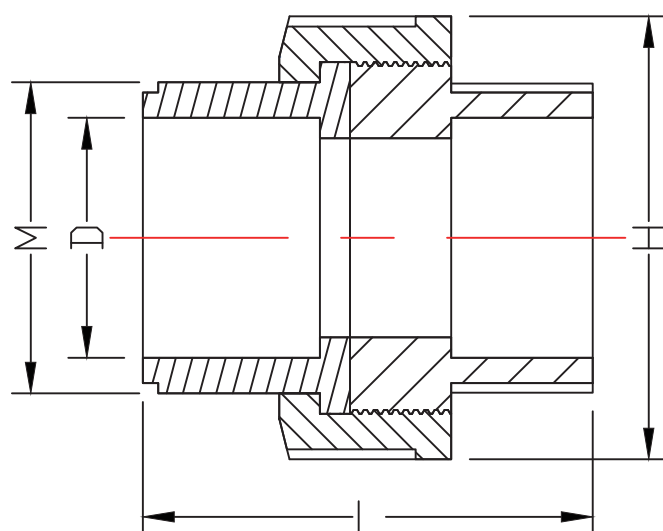
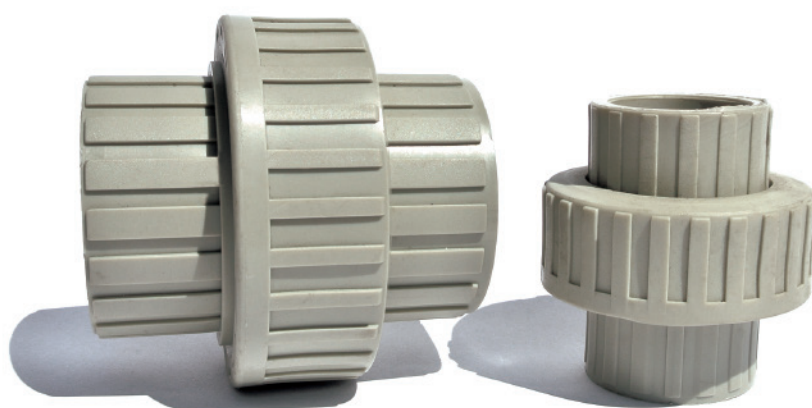
圓錐型噴水頭								單位:mm
產品編號		S×牙數	下孔徑	D	L	PP	PVC	
PP	PVC							
LC101-1	LC101-2	PT 1/4×19	11	7	30	√	-	



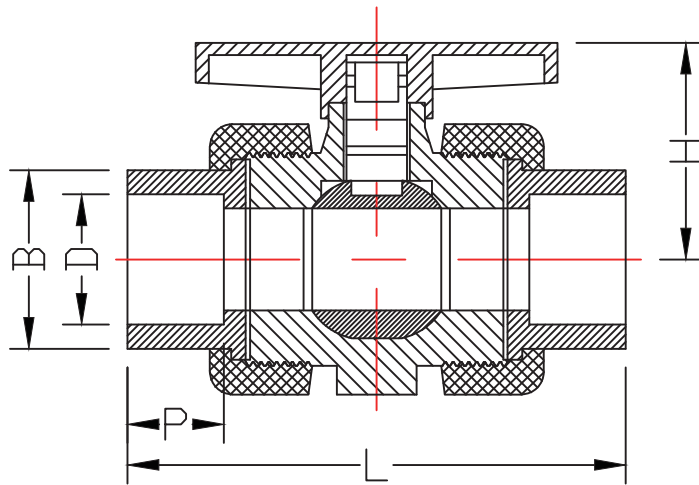
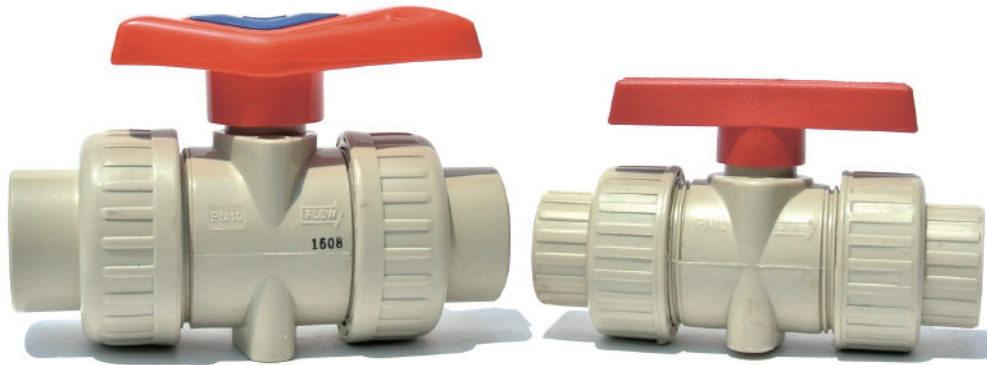
攪拌型噴水頭										單位:mm
產品編號			S×牙數	下孔徑	D	H	L	PP	PVC	PA
PP	PVC	PA								
LD101-1	LD101-2	LD101-3	PT 3/8×19	14.5	9.5	54	115	√	-	√



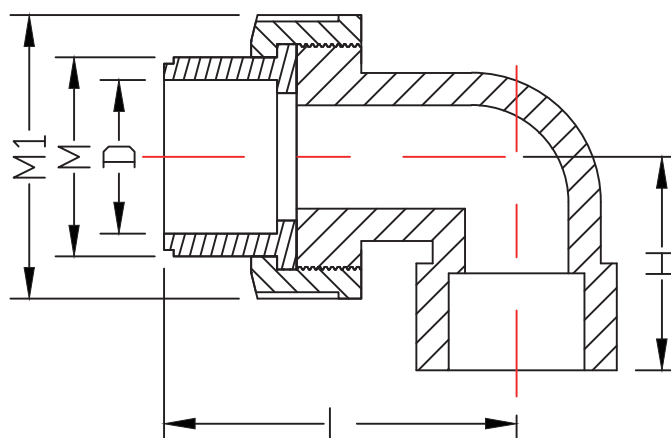
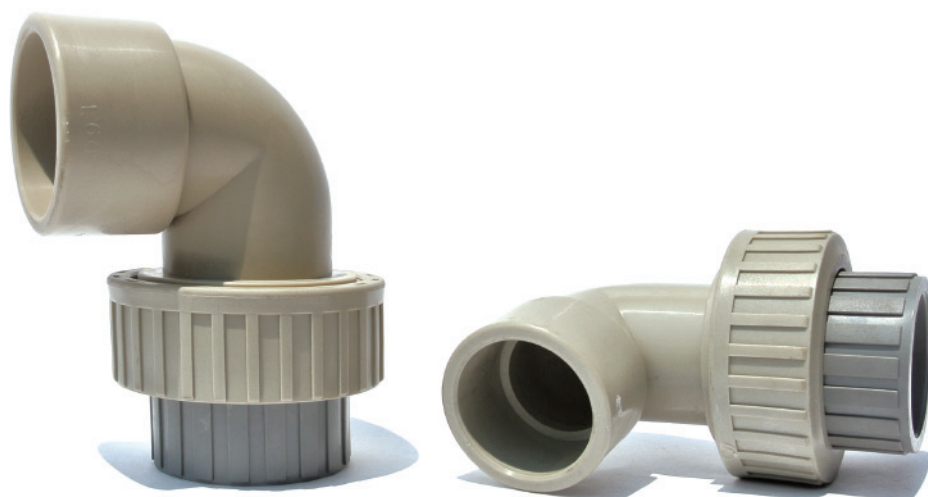
O型噴水頭									單位:mm
產品編號		S×牙數	下孔徑	D	T	H	L	PP	PVC
PP	PVC								
LE101-1	LE101-2	PT 1/2×14	18.1	13	40	38	60	√	-



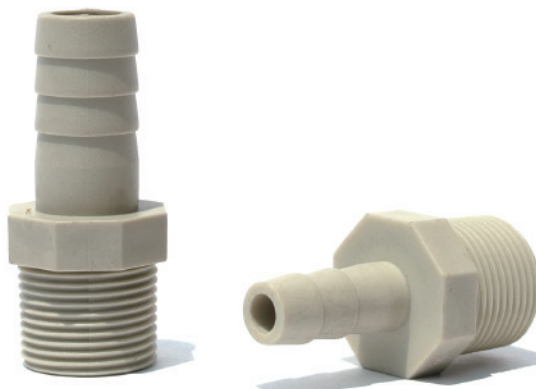
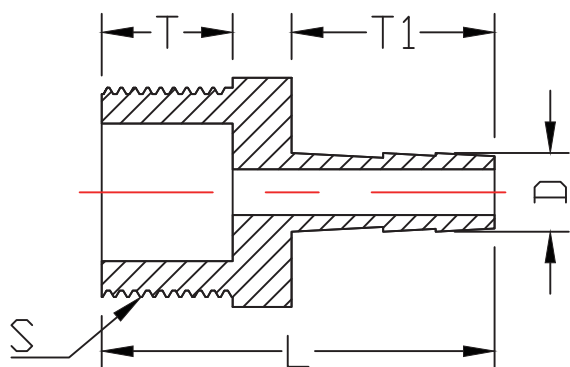
由令								單位:mm	
產品編號		規格	D	M	L	H	PP	PVC	
PP	PVC								
MA101-1	MA101-2	1/2	22	32	57	45	✓	✓	
MA102-1	MA102-2	3/4	27	37	63	55	✓	✓	
MA103-1	MA103-2	1	34	43	69	66	✓	✓	
MA104-1	MA104-2	1-1/4	42	55	81	81	✓	✓	
MA105-1	MA105-2	1-1/2	48	62	91	89	✓	✓	
MA106-1	MA106-2	2	60	74	101	101	✓	✓	
-	-	2-1/2	76	-	-	-	-	-	
-	-	3	89	-	-	-	-	-	
-	-	4	114	-	-	-	-	-	



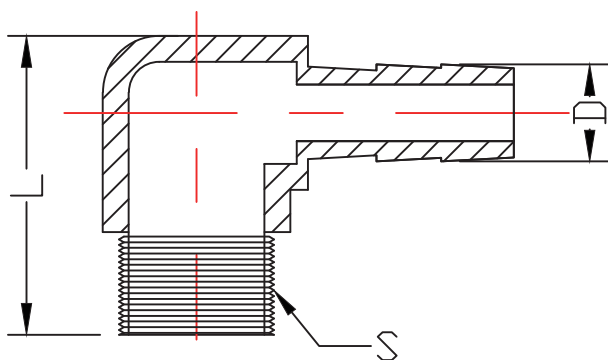
雙由令									
產品編號		規格	D	B	P	L	H	單位:mm	
PP	PVC							PP	PVC
MB101-1	MB101-2	1/2	22.3	31	22.2	111	48	✓	✓
MB102-1	MB102-2	3/4	27.3	37	25.4	130	58	✓	✓
MB103-1	MB103-2	1	34.3	44	28.6	145	65	✓	✓
MB104-1	MB104-2	1-1/4	42.3	54	31.8	165	75.5	✓	✓
MB105-1	MB105-2	1-1/2	48.46	65	34.9	171	88	✓	✓
MB106-1	MB106-2	2	60.56	78	38.1	200	107.5	✓	✓
MB107-1	MB107-2	2-1/2	76.6	91	62	180	119	✓	✓
MB108-1	MB108-2	3	89.6	107	63	239	129	✓	✓
MB109-1	MB109-2	4	114.7	145	69	278	176	✓	✓



彎頭由令									單位:mm
產品編號		規格	D	M	M1	H	L	PP	PVC
PP	PVC								
MC101-1	MC101-2	1-1/2	48	62	89	71	103	√	-
MC102-1	MC102-2	2	60	75	100	84	126	√	-

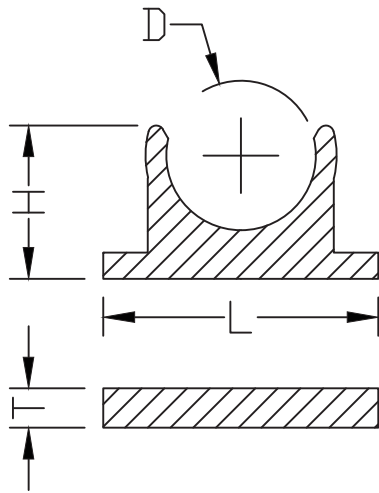


外牙接軟管									
產品編號		規格	S×牙數	D(水管)	T	T1	L	單位:mm	
PP	PVC							PP	PVC
NA101-1	NA101-2	1/4	PT 1/4×19	3/8	11	18	37	✓	-
NA102-1	NA102-2	3/8	PT 3/8×19	1/2	13	22	43	✓	✓
NA103-1	NA103-2	1/2	PT 1/2×14	3/8	18	28	54	✓	-
NA104-1	NA104-2	1/2	PT 1/2×14	1/2	18	28	54	✓	✓
NA105-1	NA105-2	3/4	PT 3/4×14	1/2	20	30	58	✓	-
NA106-1	NA106-2	3/4	PT 3/4×14	5/8	20	30	58	✓	-
NA107-1	NA107-2	3/4	PT 3/4×14	3/4	20	30	58	✓	✓
NA108-1	NA108-2	1	PT 1×11	1/2	22	31	66	✓	-
NA109-1	NA109-2	1	PT 1×11	3/4	22	31	66	✓	-
NA110-1	NA110-2	1	PT 1×11	5/8	22	31	66	✓	-
NA111-1	NA111-2	1	PT 1×11	1	22	31	66	✓	-

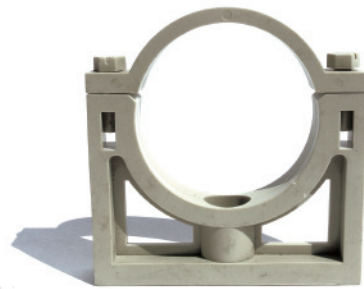
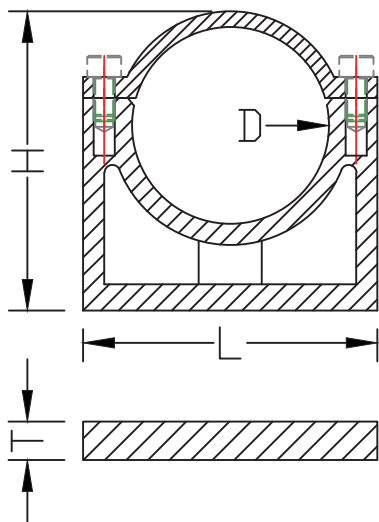


L型PT牙接頭									
產品編號			規格	S×牙數	D(水管)	L	單位:mm		
PP	PVC	PA					PP	PVC	PA
NB101-1	NB101-2	NB101-3	1/4	PT 1/4×19	3/8	31	✓	-	✓
NB102-1	NB102-2	NB102-3	3/8	PT 3/8×19	1/2	36	✓	-	✓

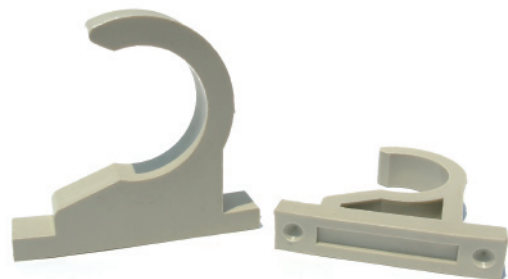
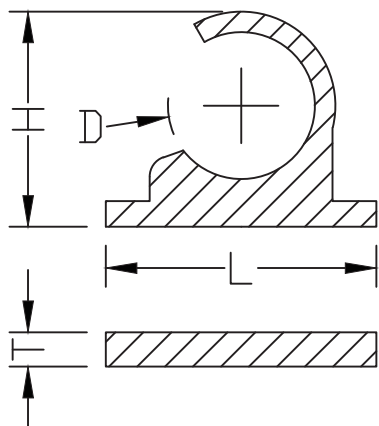
# 向上固定座、45°固定座



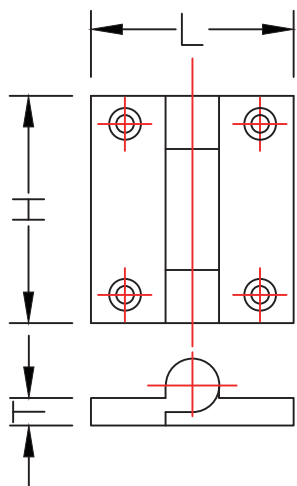
向上固定座									單位:mm
產品編號		規格	D	H	L	T	PP	PVC	
PP	PVC								
PA101-1	PA101-2	1/2	22	36	65	16	√	√	
PA102-1	PA102-2	3/4	27	43	70	17	√	√	
PA103-1	PA103-2	1	34	47	76	18	√	√	
-	-	1-1/4	42	-	-	-	-	-	
PA104-1	PA104-2	1-1/2	48	66	93	19	√	√	
PA105-1	PA105-2	2	60	71	107	20	√	√	



向上固定座									單位:mm
產品編號		規格	D	H	L	T	PP	PVC	
PP	PVC								
PA106-1	PA106-2	2-1/2	76	115	113	26	√	-	

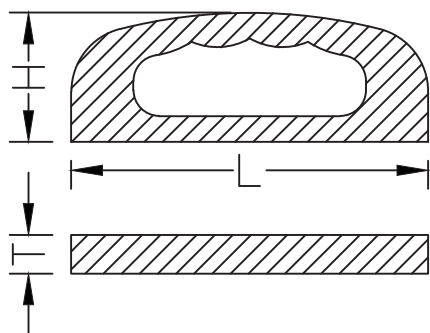


45° 固定座									單位:mm
產品編號		規格	D	H	L	T	PP	PVC	
PP	PVC								
PB101-1	PB101-2	1/2	22	42	65	16	√	√	
PB102-1	PB102-2	3/4	27	50	70	17	√	√	
PB103-1	PB103-2	1	34	58	76	18	√	√	
-	-	1-1/4	42	-	-	-	-	-	
PB104-1	PB104-2	1-1/2	48	82	93	19	√	√	
PB105-1	PB105-2	2	60	98	107	20	√	√	



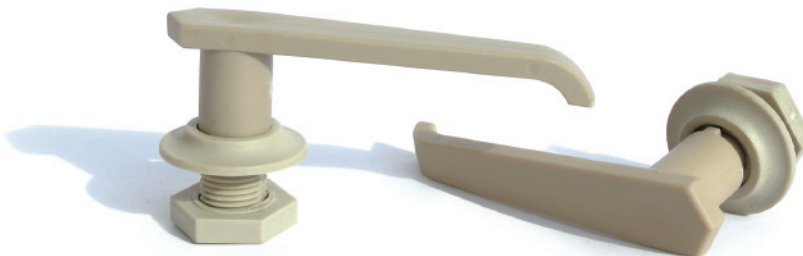
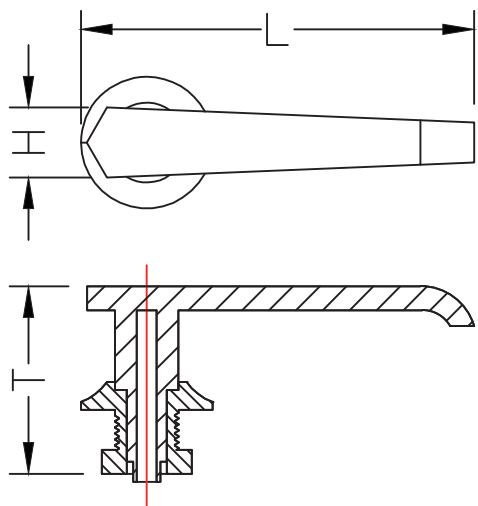
荷夾							單位:mm
產品編號		H	L	T	PP	PVC	
PP	PVC						
PC101-1	PC101-2	67	64	13	√	√	
PC102-1	PC102-2	64	57	6	√	√	
PC103-1	PC103-2	43	37	6	√	√	

(另有磁白色、黑色)



把手							單位:mm
產品編號		L	H	T	PP	PVC	
PP	PVC						
PD101-1	PD101-2	138	48	15	√	√	

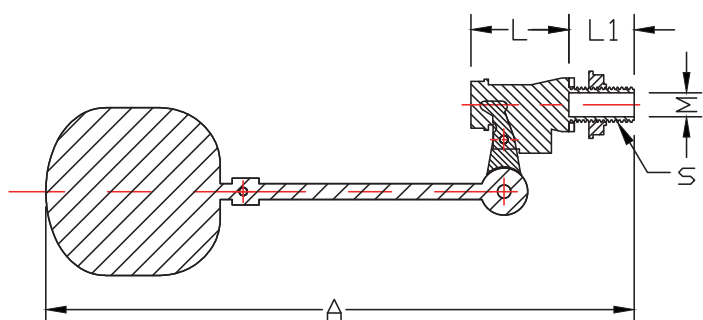
(另有磁白色)



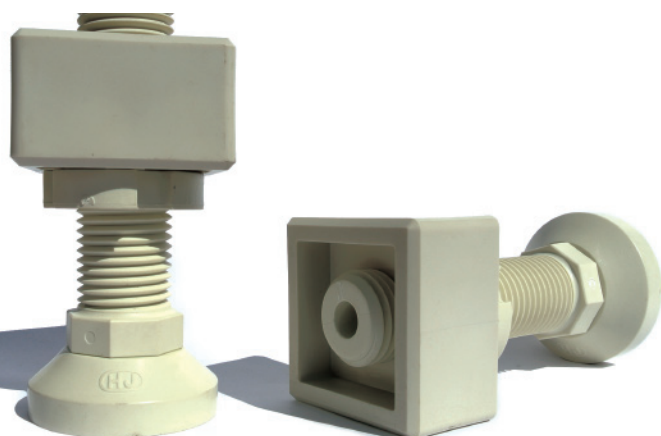
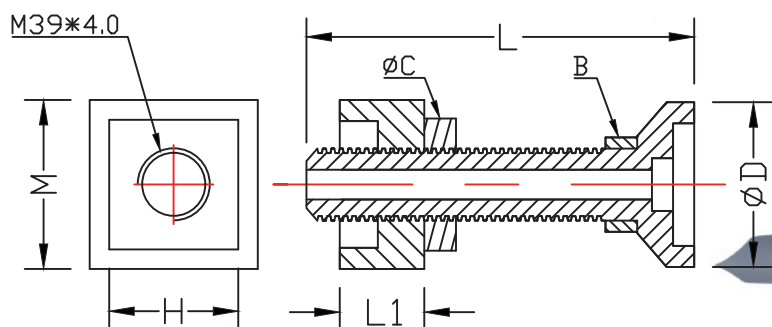
開關箱把手							單位:mm
產品編號		H	L	T	PP	PVC	
PP	PVC						
PE101-1	PE101-2	18	96	50	√	-	



# 浮球開關、可調整高度機械座

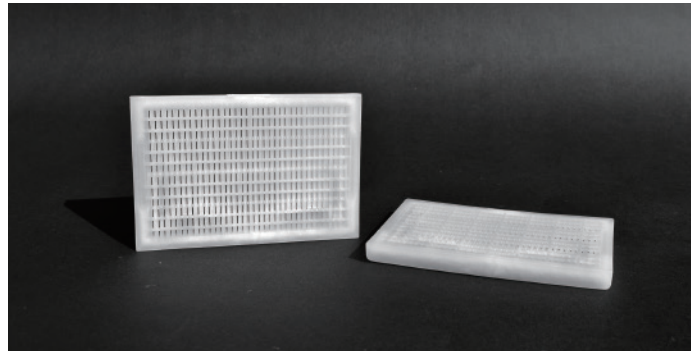
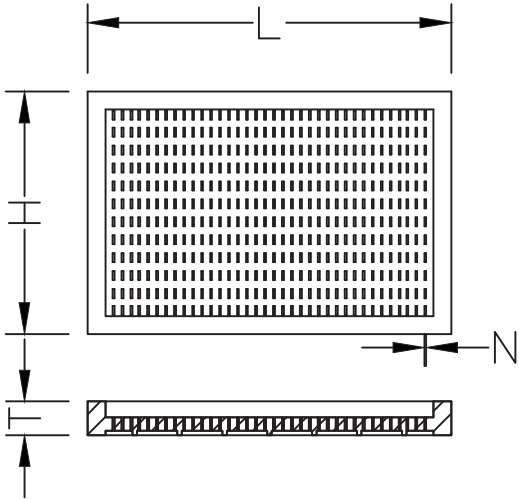


浮球開關									單位:mm
產品編號		S×牙數	下孔徑	A	L	L1	M	PP	PVC
PP	PVC								
QA101-1	QA101-2	PT 3/4×14	23.5	405	70	40	18	√	-

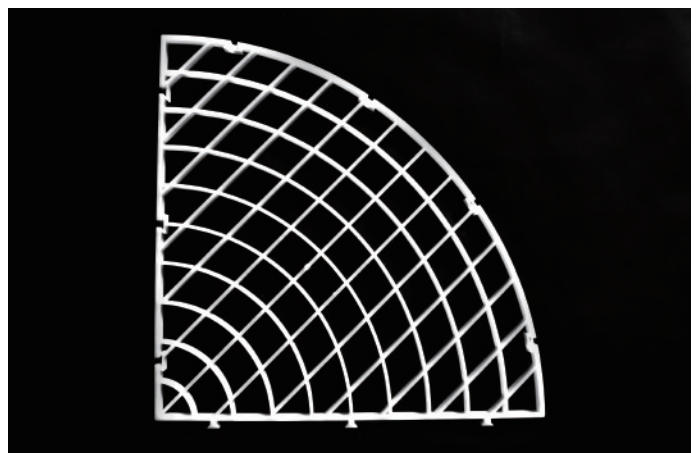
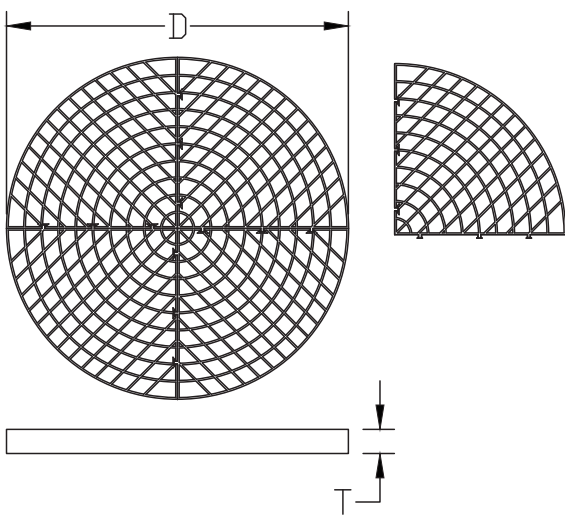


可調整高度機械座										單位:mm
產品編號		L	L1	M	H	ΦD	ΦC	B(八角)	PP	PVC
PP	PVC									
QB101-1	QB101-2	170	48	79	60	78	64	45	√	√

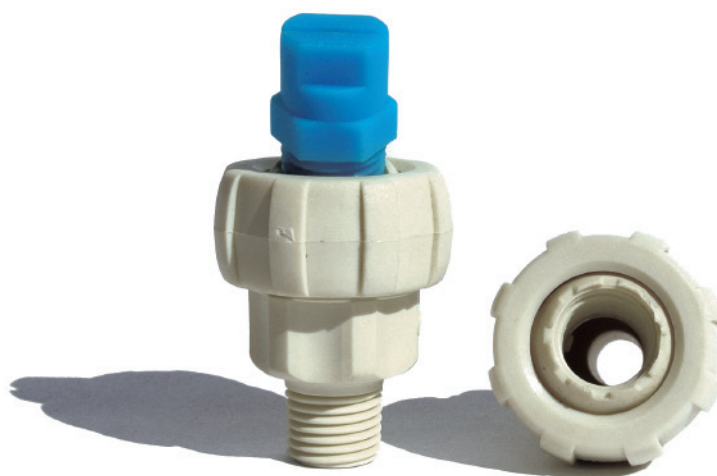
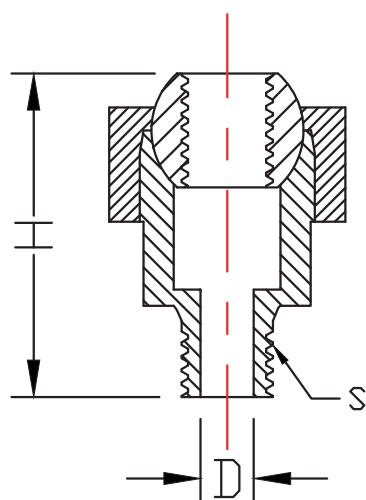
(本底座內部含有鋼條)



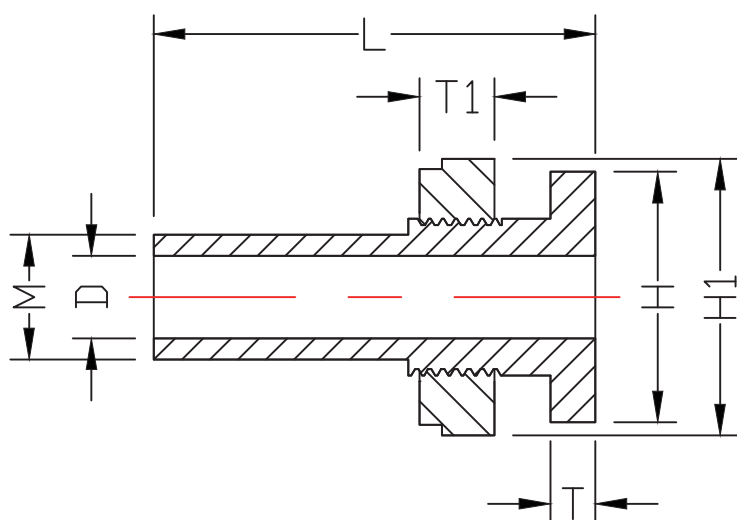
網版							單位:mm
產品編號		H	L	T	N	PP	PVC
PP	PVC						
QC101-1	QC101-2	54	81	7.5	0.4	√	-



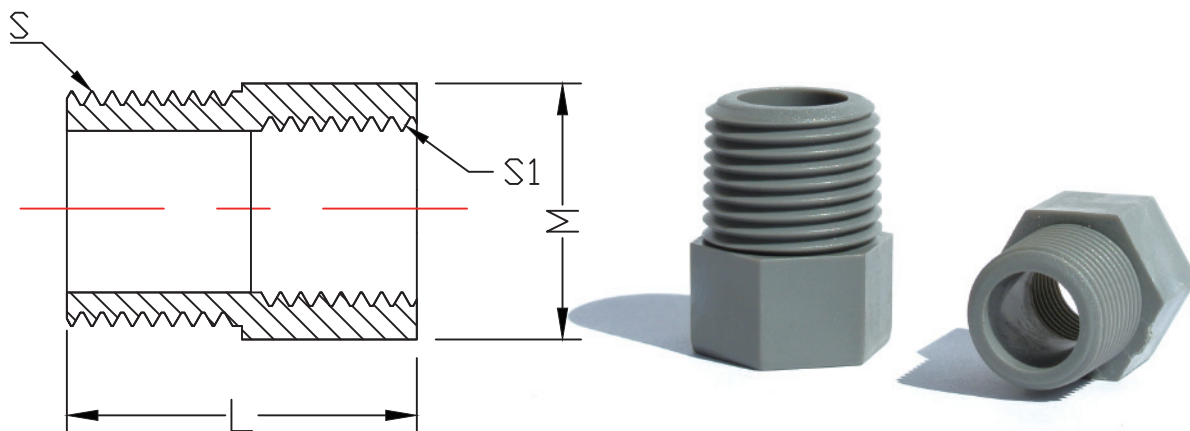
圓形隔柵板(四片組裝)					單位:mm
產品編號		D	T	PP	PVC
PP	PVC				
QD101-1	QD101-2	1000	15	√	-



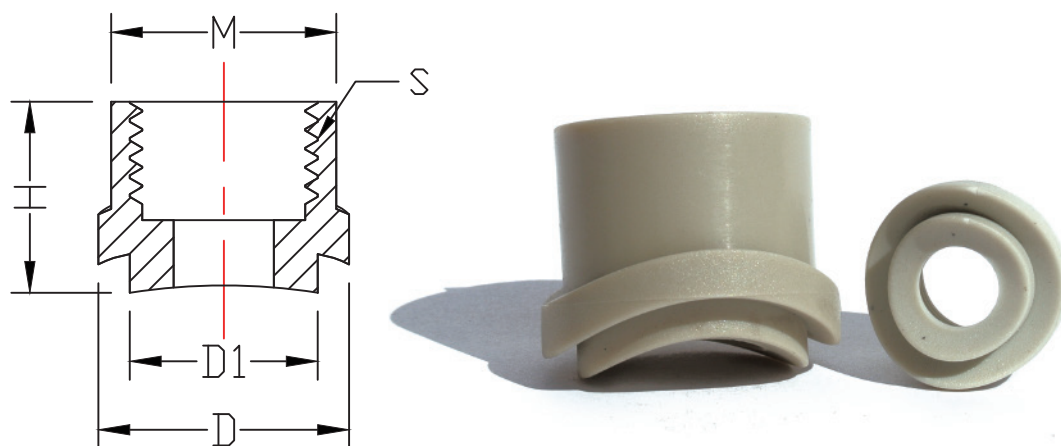
萬向接頭								單位:mm	
產品編號		S×牙數	下孔徑	H	D	PP	PVC		
PP	PVC								
QE101-1	QE101-2	PT 1/4×19	11	39	8	√	√		



桶心										單位:mm		
產品編號		L	M	D	T	T1	H(四角)	H1(八角)	PP	PVC		
PP	PVC											
QF101-1	QF101-2	120	41	22	12	20	68	72	√	-		

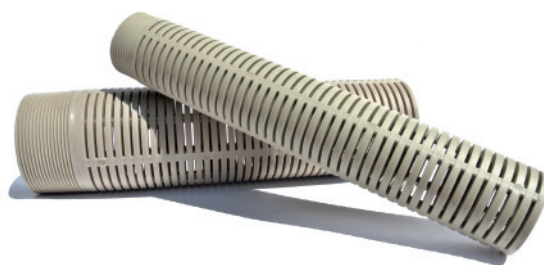
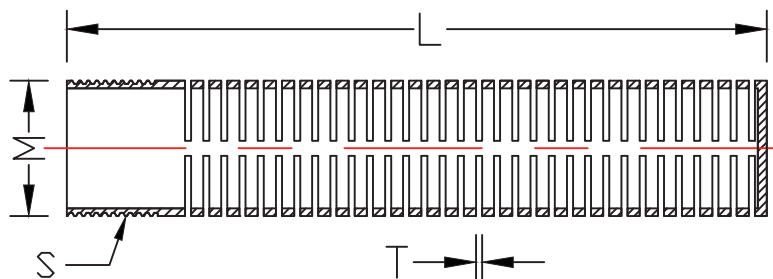


卜申									單位:mm
產品編號		規格	S×牙數	S1×牙數	M(六角)	L	PP	PVC	
PP	PVC								
QG101-1	QG101-2	1/2 × 3/8	PT 1/2 × 14	PT 3/8 × 19	21	30	✓	✓	
QG102-1	QG102-2	3/8 × 1/4	PT 3/8 × 19	PT 1/4 × 19	18.5	27	✓	✓	

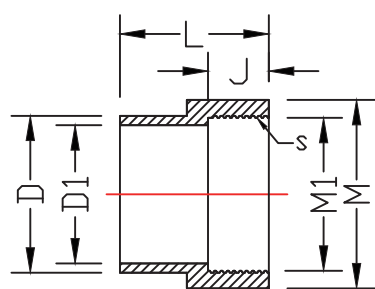


內牙貼片									單位:mm
產品編號		規格	S×牙數	M	D	D1	H	PP	PVC
PP	PVC								
QH101-1	QH101-2	1/8	PT 1/8 × 28	14	19.5	11.5	12.5	✓	✓
QH102-1	QH102-2	1/4	PT 1/4 × 19	18	23	14.5	15.5	✓	✓
QH103-1	QH103-2	3/8	PT 3/8 × 19	22	28.5	18.5	17.5	✓	✓
QH104-1	QH104-2	1/2	PT 1/2 × 14	26	33.5	23.5	25.5	✓	✓

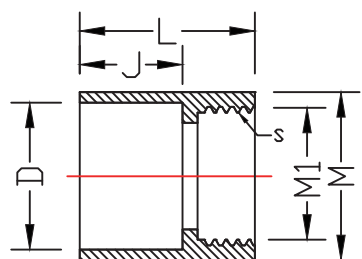
# 濾管、內牙接頭(對接)、內牙接頭(套接)



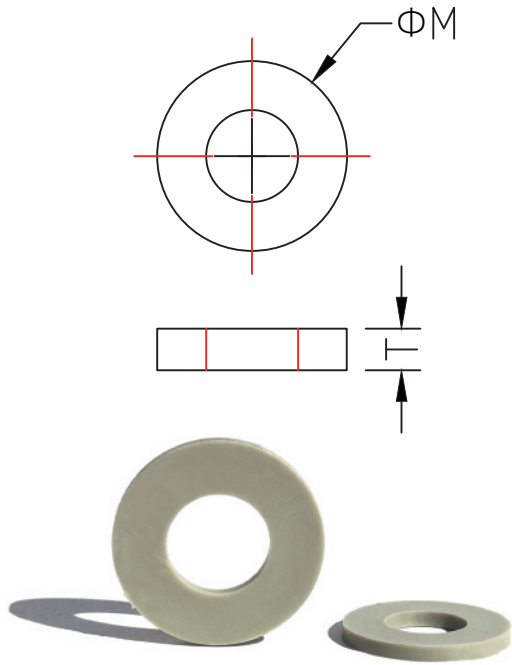
濾管									單位:mm
產品編號		規格	S×牙數	M	L	T	PP	PVC	
PP	PVC								
RA101-1	RA101-2	1-1/2	PT 1½×11	48	272	2	√	-	
RA102-1	RA102-2	2-1/2	PT 2½×11	76	152	2	√	-	
RA103-1	RA103-2		PT 2½×11	76	287	2	√	-	
RA104-1	RA104-2	4	PT 4×11	114	287	2	√	-	



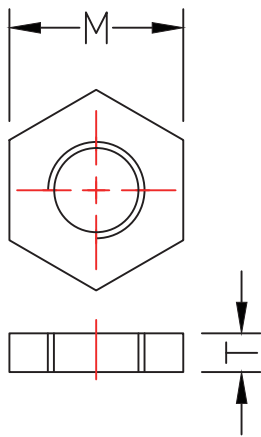
內牙接頭(對接)													單位:mm
產品編號		濾管	規格	D	D1	S×牙數	M	M1	J	L	PP	PVC	
PP	PVC												
HB103-1	HB103-2	1-1/2	1-1/2	48	40	PT 1½×11	60	45	25	65	√	-	
RB101-1	RB101-2	2-1/2	2	60	50	PT 2½×11	87	73	30	77	√	-	
RB102-1	RB102-2			69	60(套接)		87	73	30	77	√	√	
HB105-1	HB105-2			76	68		89	73	35	70	√	-	
RB103-1	RB103-2	4	3	89	79	PT 4×11	129	110	40	88	√	-	



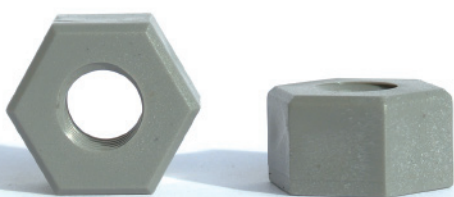
內牙接頭(套接)												單位:mm
產品編號		濾管	規格	D	S×牙數	M	M1	J	L	PP	PVC	
PP	PVC											
HA107-1	HA107-2	1-1/2	1-1/2	48	PT 1½×11	60	45	37	67	√	-	
HA109-1	HA109-2	2-1/2	2-1/2	76	PT 2½×11	89	73	37	73	√	-	
HA111-1	HA111-2	4	4	114	PT 4×11	129	111	38	84	√	-	



塑膠華司						
產品編號		規格	ΦM	T	PP	PVC
PP	PVC					
RC301-1	RC301-2	M4	Φ 10	1	✓	✓
RC302-1	RC302-2	M5	Φ 12	1	✓	✓
RC303-1	RC303-2	M6	Φ 15	1	✓	✓
RC304-1	RC304-2	M8	Φ 20	2	✓	✓
RC305-1	RC305-2	M10	Φ 24	2.5	✓	✓
RC306-1	RC306-2	M12	Φ 28	2.5	✓	✓
RC307-1	RC307-2	M16	Φ 34	2.5	✓	✓
RC308-1	RC308-2	M20	Φ 38	2.5	✓	✓

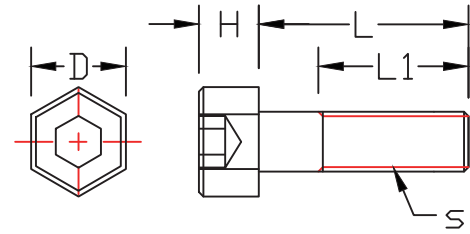
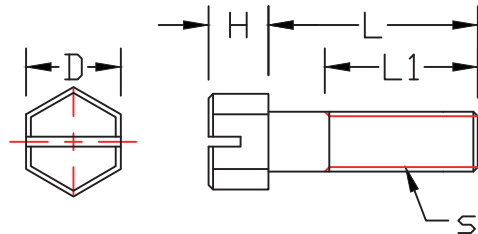
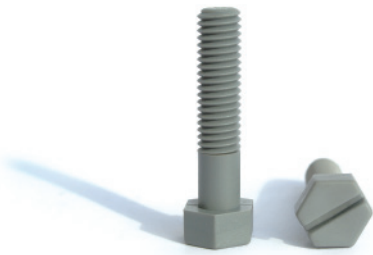


塑膠螺母(公制細牙M)						
產品編號		規格×牙距	M	T	PP	PVC
PP	PVC					
RD301-1	RD301-2	M5×0.8	8	6	✓	✓
RD302-1	RD302-2	M6×1.0	10	7	✓	✓
RD303-1	RD303-2	M8×1.25	12	9	✓	✓
RD304-1	RD304-2	M10×1.5	16	11	✓	✓
RD305-1	RD305-2	M12×1.75	20	12	✓	✓
RD306-1	RD306-2	M14×2.0	23	13	✓	✓
RD307-1	RD307-2	M16×2.0	25	14	✓	✓
RD308-1	RD308-2	M20×2.5	30	16	✓	✓



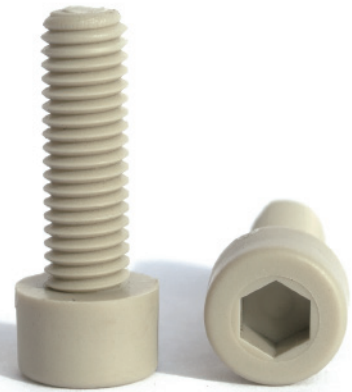
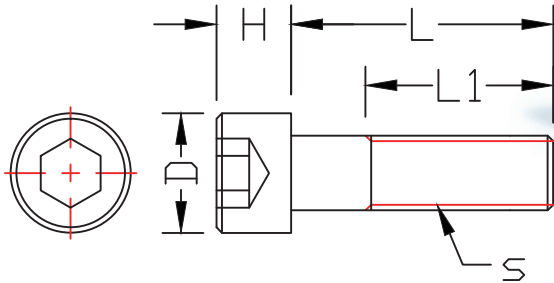
塑膠螺母(英制粗牙W)						
產品編號		規格×牙數	M	T	PP	PVC
PP	PVC					
RD401-1	RD401-2	W1/4×20	10	6	✓	✓
RD402-1	RD402-2	W5/16×18	12	7	✓	✓
RD403-1	RD403-2	W3/8×16	17	9	✓	✓
RD404-1	RD404-2	W1/2×12	21	13	✓	✓
RD405-1	RD405-2	W5/8×11	26	16	✓	✓
RD406-1	RD406-2	W3/4×10	30	16	✓	✓

# 塑膠螺絲(公制細牙M)



外六角內一字螺絲(公制細牙M)								單位:mm	
產品編號		S×牙距	L	L1(牙長)	H	D	PP	PVC	
PP	PVC								
SA301-1	SA301-2	M3×0.5	15	15	3	6	√	√	
SA302-1	SA302-2	M4×0.7	15	15	4	7	√	√	
SA303-1	SA303-2		25	15	4	7	√	√	
SA304-1	SA304-2	M5×0.8	15	15	5	8	√	√	
SA305-1	SA305-2		20	20	5	8	√	√	
SA306-1	SA306-2		25	20	5	8	√	√	
SA307-1	SA307-2		30	20	5	8	√	√	
SA308-1	SA308-2		40	20	5	8	√	√	
SA309-1	SA309-2		50	20	5	8	√	√	
SA310-1	SA310-2	M6×1.0	20	20	5.3	10	√	√	
SA311-1	SA311-2		25	25	5.3	10	√	√	
SA312-1	SA312-2		35	25	5.3	10	√	√	
SA313-1	SA313-2		45	25	5.3	10	√	√	
SA314-1	SA314-2		55	25	5.3	10	√	√	
SA315-1	SA315-2		65	25	5.3	10	√	√	
SA316-1	SA316-2	75	25	5.3	10	√	√		
SA317-1	SA317-2	M8×1.25	20	20	6.3	12	√	√	
SA318-1	SA318-2		25	25	6.3	12	√	√	
SA319-1	SA319-2		30	25	6.3	12	√	√	
SA320-1	SA320-2		35	25	6.3	12	√	√	
SA321-1	SA321-2		40	25	6.3	12	√	√	
SA322-1	SA322-2		45	25	6.3	12	√	√	
SA323-1	SA323-2		55	25	6.3	12	√	√	
SA324-1	SA324-2		65	25	6.3	12	√	√	
SA325-1	SA325-2		75	25	6.3	12	√	√	
SA326-1	SA326-2	M10×1.5	25	25	8.5	17	√	√	
SA327-1	SA327-2		30	30	8.5	17	√	√	
SA328-1	SA328-2		40	30	8.5	17	√	√	
SA329-1	SA329-2		50	30	8.5	17	√	√	
SA330-1	SA330-2		60	30	8.5	17	√	√	
SA331-1	SA331-2		70	30	8.5	17	√	√	
SA332-1	SA332-2		80	30	8.5	17	√	√	

外六角內六角螺絲(公制細牙M)								單位:mm	
產品編號		S×牙距	L	L1(牙長)	H	D	PP	PVC	
PP	PVC								
SB301-1	SB301-2	M12×1.75	40	40	12	21	√	√	
SB302-1	SB302-2		55	40	12	21	√	√	
SB303-1	SB303-2		70	40	12	21	√	√	
SB304-1	SB304-2		85	40	12	21	√	√	
SB305-1	SB305-2		100	40	12	21	√	√	
SB306-1	SB306-2		M14×2.0	45	45	14	23	√	√
SB307-1	SB307-2	60		45	14	23	√	√	
SB308-1	SB308-2	75		45	14	23	√	√	
SB309-1	SB309-2	90		45	14	23	√	√	
SB310-1	SB310-2	105		45	14	23	√	√	
SB311-1	SB311-2	120		45	14	23	√	√	
SB312-1	SB312-2	M16×2.0	45	45	16	26	√	√	
SB313-1	SB313-2		60	45	16	26	√	√	
SB314-1	SB314-2		75	45	16	26	√	√	
SB315-1	SB315-2		90	45	16	26	√	√	
SB316-1	SB316-2		105	45	16	26	√	√	
SB317-1	SB317-2		120	45	16	26	√	√	
SB318-1	SB318-2	M20×2.5	50	50	19	30	√	√	
SB319-1	SB319-2		65	50	19	30	√	√	
SB320-1	SB320-2		80	50	19	30	√	√	
SB321-1	SB321-2		95	50	19	30	√	√	
SB322-1	SB322-2		110	50	19	30	√	√	
SB323-1	SB323-2		125	50	19	30	√	√	



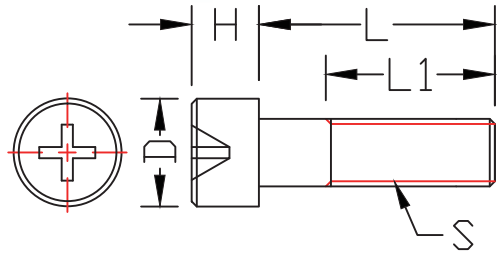
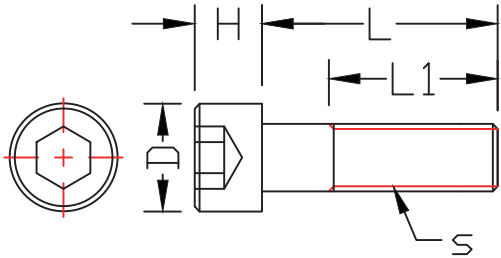
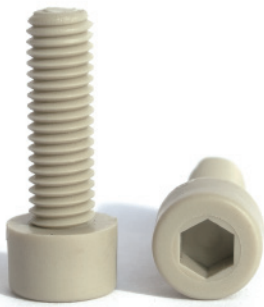
有頭內六角螺絲(公制細牙M)

單位:mm

產品編號		S×牙距	L	L1(牙長)	H	D	PP	PVC	產品編號		S×牙距	L	L1(牙長)	H	D	PP	PVC
PP	PVC								PP	PVC							
SC301-1	SC301-2	M3×0.5	15	15	3	6	✓	✓	SC333-1	SC333-2	M12×1.75	40	40	12	18	✓	✓
SC302-1	SC302-2	M4×0.7	15	15	4	7	✓	✓	SC334-1	SC334-2		55	40	12	18	✓	✓
SC303-1	SC303-2		25	15	4	7	✓	✓	SC335-1	SC335-2		70	40	12	18	✓	✓
SC304-1	SC304-2	M5×0.8	15	15	5	8.5	✓	✓	SC336-1	SC336-2		85	40	12	18	✓	✓
SC305-1	SC305-2		20	20	5	8.5	✓	✓	SC337-1	SC337-2		100	40	12	18	✓	✓
SC306-1	SC306-2		25	20	5	8.5	✓	✓									
SC307-1	SC307-2		30	20	5	8.5	✓	✓	SC338-1	SC338-2	45	45	14	21	✓	✓	
SC308-1	SC308-2		40	20	5	8.5	✓	✓	SC339-1	SC339-2	60	45	14	21	✓	✓	
SC309-1	SC309-2	M6×1.0	50	20	5	8.5	✓	✓	SC340-1	SC340-2	75	45	14	21	✓	✓	
SC310-1	SC310-2		20	20	6	10	✓	✓	SC341-1	SC341-2	90	45	14	21	✓	✓	
SC311-1	SC311-2		25	25	6	10	✓	✓	SC342-1	SC342-2	105	45	14	21	✓	✓	
SC312-1	SC312-2		35	25	6	10	✓	✓	SC343-1	SC343-2	120	45	14	21	✓	✓	
SC313-1	SC313-2		45	25	6	10	✓	✓									
SC314-1	SC314-2	55	25	6	10	✓	✓	SC344-1	SC344-2	45	45	16	24	✓	✓		
SC315-1	SC315-2	65	25	6	10	✓	✓	SC345-1	SC345-2	60	45	16	24	✓	✓		
SC316-1	SC316-2	75	25	6	10	✓	✓	SC346-1	SC346-2	75	45	16	24	✓	✓		
								SC347-1	SC347-2	90	45	16	24	✓	✓		
SC317-1	SC317-2	M8×1.25	20	20	8	13	✓	✓	SC348-1	SC348-2	105	45	16	24	✓	✓	
SC318-1	SC318-2		25	25	8	13	✓	✓	SC349-1	SC349-2	120	45	16	24	✓	✓	
SC319-1	SC319-2		30	25	8	13	✓	✓									
SC320-1	SC320-2		35	25	8	13	✓	✓									
SC321-1	SC321-2		40	25	8	13	✓	✓									
SC322-1	SC322-2		45	25	8	13	✓	✓									
SC323-1	SC323-2		55	25	8	13	✓	✓	SC350-1	SC350-2	50	50	20	30	✓	✓	
SC324-1	SC324-2		65	25	8	13	✓	✓	SC351-1	SC351-2	65	50	20	30	✓	✓	
SC325-1	SC325-2		75	25	8	13	✓	✓	SC352-1	SC352-2	80	50	20	30	✓	✓	
									SC353-1	SC353-2	95	50	20	30	✓	✓	
SC326-1	SC326-2	M10×1.5	25	25	10	16	✓	✓	SC354-1	SC354-2	110	50	20	30	✓	✓	
SC327-1	SC327-2		30	30	10	16	✓	✓	SC355-1	SC355-2	125	50	20	30	✓	✓	
SC328-1	SC328-2		40	30	10	16	✓	✓									
SC329-1	SC329-2		50	30	10	16	✓	✓									
SC330-1	SC330-2		60	30	10	16	✓	✓									
SC331-1	SC331-2		70	30	10	16	✓	✓									
SC332-1	SC332-2		80	30	10	16	✓	✓									

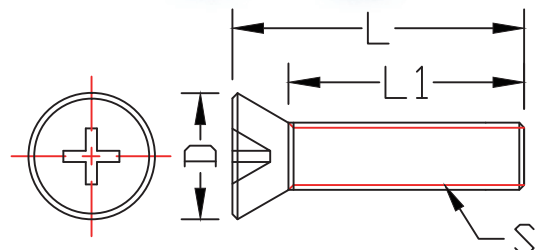


# 塑膠螺絲(公制細牙M)

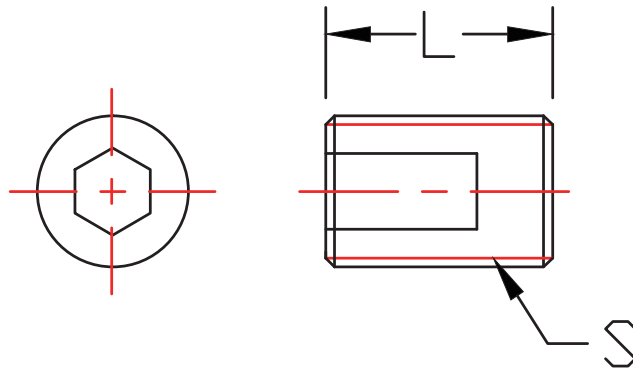


有頭內六角螺絲(公制細牙M)							單位:mm
產品編號	S×牙距	L	L1(牙長)	H	D	PPS	
PPS							
SC356-4	M4×0.7	13	13	4	7	√	
SC357-4		20	20	4	7	√	
SC358-4	M5×0.8	10	10	5	8.5	√	
SC359-4	M6×1.0	10	10	6	10	√	
SC360-4		15	15	6	10	√	
	M8×1.25						
	M10×1.5						

圓頭內十字螺絲(公制細牙M)								單位:mm
產品編號		S×牙距	L	L1(牙長)	H	D	PP	PVC
PP	PVC							
SD301-1	SD301-2	M3×0.5	15	15	3	5	√	√
SD302-1	SD302-2	M4×0.7	15	15	3	7	√	√
SD303-1	SD303-2		20	20	3	7	√	√
SD304-1	SD304-2		25	15	3	7	√	√
SD305-1	SD305-2	M5×0.8	15	15	4	9	√	√
SD306-1	SD306-2		20	20	4	9	√	√
SD307-1	SD307-2		25	25	4	9	√	√
SD308-1	SD308-2	M6×1.0	20	20	5	10	√	√
SD309-1	SD309-2		25	25	5	10	√	√

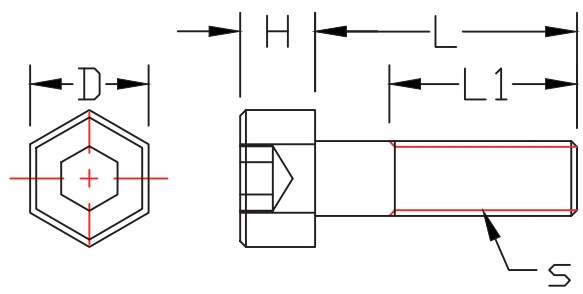
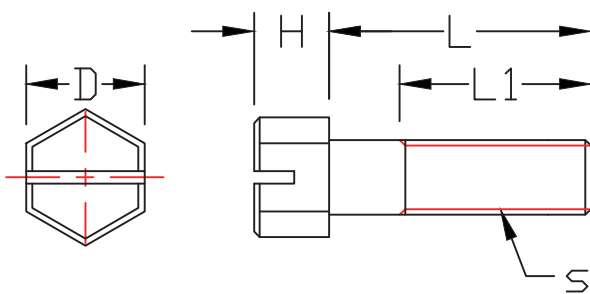
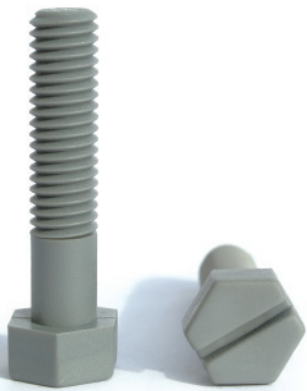


皿頭螺絲(公制細牙M)							單位:mm
產品編號		S×牙距	L	L1(牙長)	D	PP	PVC
PP	PVC						
SE301-1	SE301-2	M5×0.8	20	17	9	√	√
SE302-1	SE302-2	M6×1.0	25	22	10	√	√
SE303-1	SE303-2	M8×1.25	25	21	14	√	√
SE304-1	SE304-2	M10×1.5	30	26	16	√	√



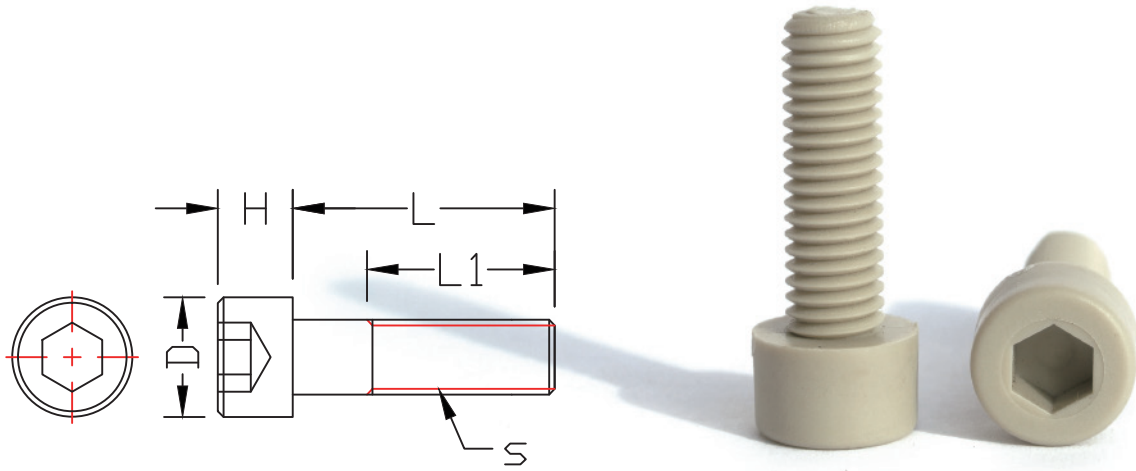
止付螺絲(公制細牙M)											
產品編號		S×牙距	L	PP	PVC	產品編號		S×牙距	L	PP	PVC
PP	PVC					PP	PVC				
SF301-1	SF301-2	M4×0.7	10	✓	✓	SF311-1	SF311-2	M12×1.75	15	✓	✓
SF302-1	SF302-2		12	✓	✓	SF312-1	SF312-2		20	✓	✓
SF303-1	SF303-2	M5×0.8	10	✓	✓	SF313-1	SF313-2	M14×2.0	15	✓	✓
SF304-1	SF304-2		12	✓	✓	SF314-1	SF314-2		20	✓	✓
SF305-1	SF305-2	M6×1.0	10	✓	✓	SF315-1	SF315-2	M16×2.0	15	✓	✓
SF306-1	SF306-2		12	✓	✓	SF316-1	SF316-2		20	✓	✓
SF307-1	SF307-2	M8×1.25	10	✓	✓	SF317-1	SF317-2	M20×2.5	20	✓	✓
SF308-1	SF308-2		12	✓	✓	SF318-1	SF318-2		25	✓	✓
SF309-1	SF309-2	M10×1.5	12	✓	✓						
SF310-1	SF310-2		15	✓	✓						

# 塑膠螺絲(英制粗牙W)



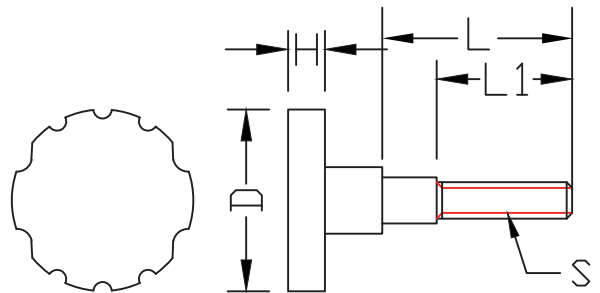
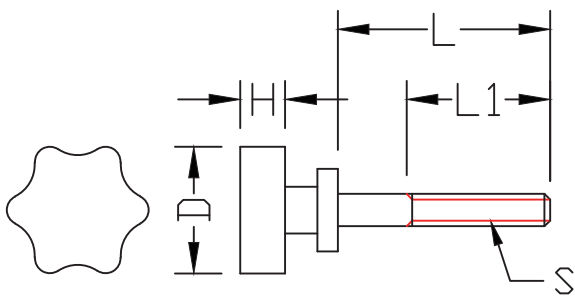
外六角內一字螺絲(英制粗牙W)								單位:mm
產品編號		S×牙數	L	L1(牙長)	H	D	PP	PVC
PP	PVC							
SA401-1	SA401-2	W1/4×20	20	20	5.3	10	√	√
SA402-1	SA402-2		25	25	5.3	10	√	√
SA403-1	SA403-2		35	25	5.3	10	√	√
SA404-1	SA404-2		45	25	5.3	10	√	√
SA405-1	SA405-2		55	25	5.3	10	√	√
SA406-1	SA406-2		65	25	5.3	10	√	√
SA407-1	SA407-2		75	25	5.3	10	√	√
SA408-1	SA408-2	W5/16×18	20	20	6.3	12	√	√
SA409-1	SA409-2		25	25	6.3	12	√	√
SA410-1	SA410-2		30	20	6.3	12	√	√
SA411-1	SA411-2		35	25	6.3	12	√	√
SA412-1	SA412-2		40	20	6.3	12	√	√
SA413-1	SA413-2		45	25	6.3	12	√	√
SA414-1	SA414-2		55	25	6.3	12	√	√
SA415-1	SA415-2	65	25	6.3	12	√	√	
SA416-1	SA416-2	75	25	6.3	12	√	√	
SA417-1	SA417-2	W3/8×16	25	25	8.5	17	√	√
SA418-1	SA418-2		30	30	8.5	17	√	√
SA419-1	SA419-2		40	30	8.5	17	√	√
SA420-1	SA420-2		50	30	8.5	17	√	√
SA421-1	SA421-2		60	30	8.5	17	√	√
SA422-1	SA422-2		70	30	8.5	17	√	√
SA423-1	SA423-2		80	30	8.5	17	√	√

外六角內六角螺絲(英制粗牙W)								單位:mm
產品編號		S×牙數	L	L1(牙長)	H	D	PP	PVC
PP	PVC							
SB401-1	SB401-2	W1/2×12	40	40	12	21	√	√
SB402-1	SB402-2		55	40	12	21	√	√
SB403-1	SB403-2		70	40	12	21	√	√
SB404-1	SB404-2		85	40	12	21	√	√
SB405-1	SB405-2		100	40	12	21	√	√
SB406-1	SB406-2	W5/8×11	20	20	16	26	√	√
SB407-1	SB407-2		45	45	16	26	√	√
SB408-1	SB408-2		60	45	16	26	√	√
SB409-1	SB409-2		75	45	16	26	√	√
SB410-1	SB410-2		90	45	16	26	√	√
SB411-1	SB411-2		105	45	16	26	√	√
SB412-1	SB412-2	120	45	16	26	√	√	
SB413-1	SB413-2	W3/4×10	50	50	19	30	√	√
SB414-1	SB414-2		65	50	19	30	√	√
SB415-1	SB415-2		80	50	19	30	√	√
SB416-1	SB416-2		95	50	19	30	√	√
SB417-1	SB417-2		110	50	19	30	√	√
SB418-1	SB418-2	125	50	19	30	√	√	



有頭內六角螺絲(英制粗牙W)														單位:mm			
產品編號		S×牙數	L	L1(牙長)	H	D	PP	PVC	產品編號		S×牙數	L	L1(牙長)	H	D	PP	PVC
PP	PVC								PP	PVC							
SC401-1	SC401-2	W1/4×20	20	20	6	10	✓	✓	SC424-1	SC424-2	W1/2×12	40	40	12	18	✓	✓
SC402-1	SC402-2		25	25	6	10	✓	✓	SC425-1	SC425-2		55	40	12	18	✓	✓
SC403-1	SC403-2		35	25	6	10	✓	✓	SC426-1	SC426-2		70	40	12	18	✓	✓
SC404-1	SC404-2		45	25	6	10	✓	✓	SC427-1	SC427-2		85	40	12	18	✓	✓
SC405-1	SC405-2		55	25	6	10	✓	✓	SC428-1	SC428-2		100	40	12	18	✓	✓
SC406-1	SC406-2		65	25	6	10	✓	✓									
SC407-1	SC407-2		75	25	6	10	✓	✓									
SC408-1	SC408-2	W5/16×18	20	20	8	13	✓	✓	SC429-1	SC429-2	W5/8×11	45	45	16	24	✓	✓
SC409-1	SC409-2		25	25	8	13	✓	✓	SC430-1	SC430-2		60	45	16	24	✓	✓
SC410-1	SC410-2		30	20	8	13	✓	✓	SC431-1	SC431-2		75	45	16	24	✓	✓
SC411-1	SC411-2		35	25	8	13	✓	✓	SC432-1	SC432-2		90	45	16	24	✓	✓
SC412-1	SC412-2		40	20	8	13	✓	✓	SC433-1	SC433-2		105	45	16	24	✓	✓
SC413-1	SC413-2		45	25	8	13	✓	✓	SC434-1	SC434-2		120	45	16	24	✓	✓
SC414-1	SC414-2		55	25	8	13	✓	✓									
SC415-1	SC415-2	65	25	8	13	✓	✓	SC435-1	SC435-2	W3/4×10	50	50	20	30	✓	✓	
SC416-1	SC416-2	75	25	8	13	✓	✓	SC436-1	SC436-2		65	50	20	30	✓	✓	
								SC437-1	SC437-2		80	50	20	30	✓	✓	
								SC438-1	SC438-2		95	50	20	30	✓	✓	
SC417-1	SC417-2	W3/8×16	25	25	10	16	✓	✓	SC439-1		SC439-2	110	50	20	30	✓	✓
SC418-1	SC418-2		30	30	10	16	✓	✓	SC440-1		SC440-2	125	50	20	30	✓	✓
SC419-1	SC419-2		40	30	10	16	✓	✓									
SC420-1	SC420-2		50	30	10	16	✓	✓									
SC421-1	SC421-2		60	30	10	16	✓	✓									
SC422-1	SC422-2		70	30	10	16	✓	✓									
SC423-1	SC423-2		80	30	10	16	✓	✓									

# 塑膠螺絲(英制粗牙W)



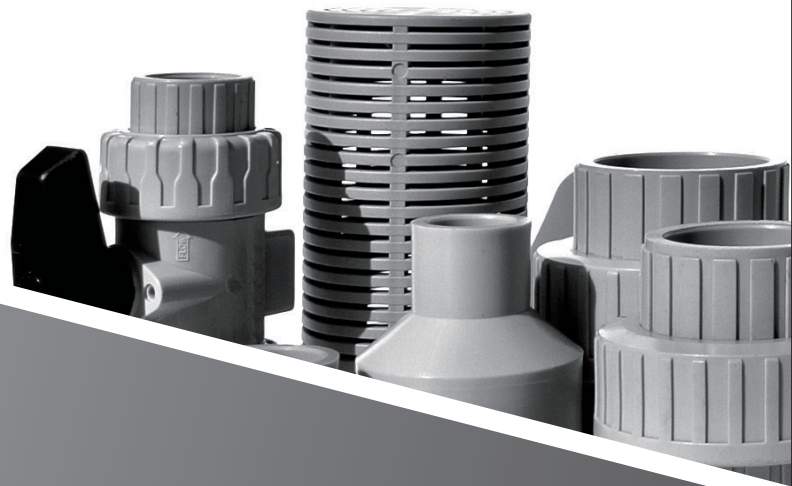
梅花螺絲(英制粗牙W)								單位:mm
產品編號		S×牙數	L	L1(牙長)	H	D	PP	PVC
PP	PVC							
SG401-1	SG401-2	W3/8×16	35	35	9	40	✓	✓
SG402-1	SG402-2		50	35	9	40	✓	✓
SG403-1	SG403-2		65	35	9	40	✓	✓
SG404-1	SG404-2		80	35	9	40	✓	✓
SG405-1	SG405-2		95	35	9	40	✓	✓
SG406-1	SG406-2	W1/2×12	35	35	11	40	✓	✓
SG407-1	SG407-2		35	35	11	50	✓	✓
SG408-1	SG408-2		50	35	11	50	✓	✓
SG409-1	SG409-2		65	35	11	50	✓	✓
SG410-1	SG410-2		80	35	11	50	✓	✓
SG411-1	SG411-2		95	35	11	50	✓	✓
SG412-1	SG412-2	W5/8×11	35	35	15	60	✓	✓
SG413-1	SG413-2		50	35	15	60	✓	✓
SG414-1	SG414-2		65	35	15	60	✓	✓
SG415-1	SG415-2		80	35	15	60	✓	✓
SG416-1	SG416-2		95	35	15	60	✓	✓
SG417-1	SG417-2	W3/4×10	35	35	15	60	✓	✓
SG418-1	SG418-2		50	35	15	60	✓	✓
SG419-1	SG419-2		65	35	15	60	✓	✓
SG420-1	SG420-2		80	35	15	60	✓	✓
SG421-1	SG421-2		95	35	15	60	✓	✓

梅花螺絲(英制粗牙W)								單位:mm
產品編號		S×牙數	L	L1(牙長)	H	D	PP	PVC
PP	PVC							
SG422-1	SG422-2	W3/4×10	60	46	16	80	✓	✓



日規-PP管材					
產品編號	規格	外徑	厚度	長度/m	PP
TA101-1	1/2	22	2.5	4	✓
TA102-1	3/4	27	2.5	4	✓
TA103-1	1	34	3	4	✓
TA104-1			4	4	✓
TA105-1	1-1/4	42	3.5	4	✓
TA106-1	1-1/2	48	4	4	✓
TA107-1			6	4	✓
TA108-1	2	60	4.5	4	✓
TA109-1			8	4	✓
TA110-1	2-1/2	76	4	6	✓
TA111-1			8	6	✓
TA112-1	3	89	4	6	✓
TA113-1			5	6	✓
TA114-1			8	6	✓
TA115-1	4	114	3	6	✓
TA116-1			5.5	6	✓
TA117-1			8	6	✓
TA118-1	5	140	4	6	✓
TA119-1			6.5	6	✓
TA120-1	6	165	4	6	✓
TA121-1			7	6	✓
TA122-1	8	216	5	6	✓
TA123-1			8	6	✓
TA124-1	10	267	5	5	✓
TA125-1			10	5	✓
TA126-1	12	318	5	5	✓
TA127-1			12	5	✓

歐規-PP管材					
產品編號	規格	外徑	厚度	長度/m	PP
TA201-1	1/2	20	2.5	5	✓
TA202-1	3/4	25	2.7	5	✓
TA203-1	1	32	3	5	✓
TA204-1	1-1/4	40	3.7	5	✓
TA205-1	1-1/2	50	4.6	5	✓
TA206-1	2	63	5.8	5	✓
TA207-1	2-1/2	75	4.3	5	✓
TA208-1			6.9	5	✓
TA209-1	3	90	2.2	5	✓
TA210-1			5.1	5	✓
TA211-1			8.2	5	✓
TA212-1	4	110	2.7	5	✓
TA213-1			6.3	5	✓
TA214-1			10	5	✓
TA215-1	5	140	3.5	5	✓
TA216-1	6	160	3.9	5	✓
TA217-1	8	200	4.9	5	✓
TA218-1	10	250	6.1	5	✓
TA219-1	12	315	7.7	5	✓
TA220-1	14	355	8.7	5	✓
TA221-1	16	400	9.8	5	✓



合傑模具實業社

HO JIE INDUSTRIAL CO., LTD.